

Title (English)	Establishment of intestinal organoids from small intestine of growing cattle (12 months old)
Running Title (English)	Cultivation of growing cattle derived intestinal organoids
Author	Kang Won Park [first_author] , Hyeon Yang, Min Gook Lee, Sun A Ock, Hayeon Wi, Poongyeon Lee, In-Sul Hwang, Jae Gyu Yoo, Choon-Keun Park, Bo Ram Lee
Affiliation	1 Animal Biotechnology Division, National Institute of Animal Science, Rural Development Administration, Wanju-gun 55365, Korea, Republic of 2 Columbia Center for Translational Immunology, Columbia University Irving Medical Center, Columbia University, New York 10032, United States 3 College of Animal Life Sciences, Kangwon National University, Chuncheon 24341, Korea, Republic of
Corresponding Author	Bo Ram Lee (mir88@korea.kr, office: +82 63 238 7259, mobile: +82 63 238 7297)
ORCID	Kang Won Park (https://orcid.org/0000-0001-6487-1583) Hyeon Yang (https://orcid.org/0000-0003-4162-4410) Min Gook Lee (https://orcid.org/0000-0001-8237-6447) Sun A Ock (https://orcid.org/0000-0002-0887-8200) Hayeon Wi (https://orcid.org/0000-0001-5008-4626) Poongyeon Lee (https://orcid.org/0000-0003-2447-0392) In-Sul Hwang (https://orcid.org/0000-0003-2949-3075) Jae Gyu Yoo (https://orcid.org/0000-0002-8542-9193) Choon-Keun Park (https://orcid.org/0000-0003-2786-8814) Bo Ram Lee (https://orcid.org/0000-0002-0537-6205)
Conflict of interest	The authors declare that they have no competing interests.
Funding information	This work was supported by the National Institute of Animal Science (Grant No. PJ01422201) and the collaborative research program between University (2022), Rural Development Administration (RDA), Korea.
Acknowledgements	Not applicable.
Availability of data and material	Upon reasonable request, the datasets of this study can be available from the corresponding author.

Author Contribution	<p>Conceptualization: Lee BR</p> <p>Data curation: Park KW, Yang H, Lee MG, Ock SA, Wi H, Lee P, Hwang IS, Yoo JG, Park CK, Lee BR</p> <p>Formal analysis: Park KW, Yang H, Lee MG, Ock SA, Wi H, Lee P, Hwang IS, Yoo JG, Park CK, Lee BR</p> <p>Methodology: Park KW, Yang H, Lee MG, Ock SA, Wi H, Lee P, Hwang IS, Yoo JG, Park CK, Lee BR</p> <p>Validation: Lee BR</p> <p>Investigation: Park KW, Yang H, Lee MG, Ock SA, Wi H, Lee P, Hwang IS, Yoo JG, Park CK, Lee BR</p> <p>Writing - original draft: Park KW, Lee BR</p> <p>Writing - review & editing: Park KW, Yang H, Lee MG, Ock SA, Wi H, Lee P, Hwang IS, Yoo JG, Park CK, Lee BR</p>
IRB/IACUC approval	<p>The experimental use of Hanwoo cattle was approved by the Institutional Animal Care and Use Committee (IACUC) of the National Institute of Animal Science (NIAS-2019-366), Korea.</p>

ACCEPTED

Establishment of intestinal organoids from small intestine of growing cattle (12 months old)

Kang Won Park¹, Hyeon Yang¹, Min Gook Lee¹, Sun A Ock¹, Hayeon Wi¹, Poongyeon Lee¹, In-Sul Hwang², Jae Gyu Yoo¹, Choon-Keun Park³, Bo Ram Lee^{1,*}

¹Animal Biotechnology Division, National Institute of Animal Science, Rural Development Administration, Wanju-gun 55365, Korea

²Columbia Center for Translational Immunology, Columbia University Irving Medical Center, Columbia University, New York, NY, 10032, USA

³College of Animal Life Sciences, Kangwon National University, Chuncheon 24341, Korea

Running Title: Cultivation of the ileum-derived intestinal organoids from growing cattle

*Correspondence: Animal Biotechnology Division, National Institute of Animal Science, Rural Development Administration, Wanju-gun 55365, Korea. Tel.: +82 63 238 7259; Fax: +82 63 238 7297; E-mail: mir88@korea.kr

ABSTRACT

Recently, we reported the robust *in vitro* three-dimensional (3D) expansion of intestinal organoids derived from adult bovine (> 24 months) samples. The present study aimed to establish an *in vitro* 3D system for the cultivation of intestinal organoids derived from growing cattle (12 months old) for practical use as a potential alternative to *in vivo* systems for various purposes. However, very few studies on the functional characterization and three-dimensional (3D) expansion of adult stem cells from livestock species compared to those from other species are available. In this study, intestinal crypts, including intestinal stem cells, from the small intestines (ileum and jejunum) of growing cattle were isolated and long-term 3D cultures were successfully established using a scaffold-based method. Furthermore, we generated an apical-out intestinal organoid derived from growing cattle. Interestingly, intestinal organoids derived from the ileum, but not the jejunum, could be expanded without losing the ability to recapitulate crypts, and these organoids specifically expressed several specific markers of intestinal stem cells and the intestinal epithelium. Furthermore, these organoids exhibited key functionality with regard to high permeability for compounds up to 4 kDa in size (e.g., FITC-dextran), indicating that apical-out intestinal organoids are better than other models. Collectively, these results indicate the establishment of growing cattle-derived intestinal organoids and subsequent generation of apical-out intestinal organoids. These organoids may be valuable tools and potential alternatives to *in vivo* systems for examining host-pathogen interactions involving epithelial cells, such as enteric virus infection and nutrient absorption, and may be used for various purposes.

Keywords: Growing cattle, 3D cultivation, Intestinal organoids, Apical-out structure, Characterization

INTRODUCTION

The small intestine consists of the duodenum, jejunum, and ileum and performs a variety of functions, such as nutrient absorption, electrolyte uptake, hormone secretion and host-pathogen interactions in intestinal epithelium that is composed of a variety of intestinal cell types such as Paneth cells, enteroendocrine cells, goblet cells and enterocytes [1, 2]. Recently, a scaffold-based three-dimensional (3D) culture system has provided a reliable alternative platform for the establishment of pluripotent and adult stem cells derived intestinal organoids *in vitro*. *In vitro* three-dimensional (3D) organoid systems are valuable tools and potential alternatives to *in vivo* systems [3], and these *in vitro* organoid systems have been used for novel practical applications in various fields, such as animal science, animal biotechnology, and biomedicine [1].

Recent progress has been made to establish intestinal organoids derived from livestock, including bovine [2], porcine [4], chicken [5] and equine [6]. In particular, we previously reported a reliable method for the isolation of intestinal crypts from small intestines and the robust 3D expansion of intestinal organoids (basal-out) derived from adult bovine [2, 7]. Generally, basal-out intestinal organoids have the intestinal basal membrane on the surface. However, there are practical limitations associated with the potential use of intestinal organoids, such as host-pathogen interactions and nutrient absorption, because intestinal organoids cultivated in Matrigel have all basal-out structures [8-10]. Thus, development of apical-out organoid culture system (polarity reversal) is required. Moreover, very few studies on the functional characterization and three-dimensional (3D) expansion of adult stem cells isolated from livestock species compared to those from other species are available [11].

In this study, we successfully established growing cattle-derived intestinal organoids and apical-out intestinal organoids and characterized their cellular potentials using gene expression profiling and immunocytochemistry. Furthermore, we investigated the permeability of the epithelial barriers of these apical-out and basal-out organoids using FITC-dextran.

Materials and Methods

Experimental designs and animals

The aim of present study was the identification of adult intestinal stem cells and the cultivation of intestinal organoids derived from growing cattle (12 months old). Hanwoo growing cattle (*Bos Taurus coreanae*) were used for these experiments, and the experiments were approved by the Institutional Animal Care and Use Committee (IACUC) of the National Institute of Animal Science (NIAS-2019-366), Korea.

Isolation of intestinal crypts from the small intestines of growing cattle and establishment of intestinal organoids

The isolation of intestinal crypts from growing cattle and establishment of intestinal organoids were conducted as previously described [2]. Briefly, ileum and jejunum fragments were obtained from the small intestines of growing cattle (12 months old). After washing ice-cold phosphate-buffered saline (PBS) and 1% penicillin/streptomycin (Sigma-Aldrich, NY, USA), The fragments were dissected vertically and washed thoroughly with washing buffer to remove debris. To remove the mucosal and submucosal layers were used to scrape a glass slide. The remaining muscle layer was cut into 3- to 5-mm pieces and repeatedly washed by shaking vigorously until the supernatant was clear. After centrifuged at $300 \times g$, the collected pellet was resuspended in 25 mL of Cell Disassociation Solution (Stem Cell Technologies, Vancouver, Canada) and incubated at room temperature for 40 min on a rocker to release the crypts. Intestinal crypts were added in 1 mL of intestinal human organoid medium (Stem Cell Technologies) and the number of intestinal crypts was counted using a hemocytometer under an inverted microscope. A total seeding mixture with 100-150 crypts and Matrigel in a 1:1 ratio was prepared and carefully placed in the middle of the wells of a 24-well plate. After 20 min, the matrigel dome was completely polymerized and gently added 1ml of organoid growth medium to each well.

Passage and cryopreservation of growing cattle-derived intestinal organoids

The growing cattle-derived intestinal organoids were passaged approximately once a week upon maturation as previously described [2]. Briefly, the medium was completely removed and the organoid dome was rinsed with ice-cold PBS. The organoids were collected by centrifugation at $300 \times g$ for 5 min after removing the Matrigel dome using enzyme-free cell disassociation buffer. The pellets were seeded in the amount of medium and Matrigel in a 1:1 ratio, and each well (140-150 organoids) was passaged into three parts in 24-well plates. The medium was replaced every 3 days, and the organoids were subcultured once a week. The number of organoids was counted in triplicate every week. For cryopreservation, the organoids were resuspended in preserving solution composed of 90% medium and 10% dimethyl sulfoxide (Sigma-Aldrich, NY, USA), and transferred to a liquid nitrogen tank after stored at -80°C for 24 hr.

Histology and immunohistochemistry

After being thoroughly washed with ice-cold PBS, ileum and jejunum fragments from the small intestine were fixed in 10% neutral-buffered formalin (Sigma-Aldrich, NY, USA). The fragments were subsequently embedded

in a paraffin block, and the fragments were vertically and horizontally sectioned at a thickness of 3-5 μm . The sections were then deparaffinized in xylene, rehydrated with water using a graded series of alcohol solutions, and processed prior to hematoxylin and eosin (Merck, Darmstadt, Germany) staining. For immunohistochemical analysis, the sections were permeabilized with 0.1% Triton X-100 in PBS for 5 min and incubated with 0.1% normal goat serum for 1 h to block nonspecific binding after antigen retrieval by boiling in a sodium citrate buffer solution. The samples were incubated overnight at 4 °C with the appropriate primary antibodies. The antibodies used in the present study are shown in Table 1. After washing with PBS, the samples were incubated with anti-mouse and anti-rabbit secondary antibodies coupled to Alexa Fluor-488 and Alexa Fluor-594 (Molecular Probes/Life Technologies, Waltham, MA, USA), for 1 h at room temperature, respectively. Diamidino-2-phenylindole (DAPI) was used to counterstained these fluorescent samples. Images were captured using an Olympus X100 confocal microscope (Olympus, Tokyo, Japan).

Immunocytochemistry

The organoids were maintained in 24-well plates until maturation. The medium was removed from the wells, and the organoids were gently washed by cold PBS. Briefly, the organoids were incubated in neutrally buffered 4% paraformaldehyde (Sigma-Aldrich, NY, USA) for 30 min at room temperature. After permeabilization with 0.5% Triton X-100 (v/v) (Sigma-Aldrich, NY, USA) in PBS for 30 min at room temperature, the blocking step was performed using 3% bovine serum albumin in PBS for 1 h at room temperature. Then, the organoids were thoroughly washed with PBS and incubated overnight at 4 °C with the appropriate primary antibodies, as shown in Table 1, at their appropriate dilutions. The protein expression against specific antibody was measured by incubating the samples with corresponding secondary antibodies coupled to Alexa Fluor-488 and Alexa Fluor-594 (Molecular Probes/Life Technologies) for 1 h at room temperature. These fluorescent samples were counterstained with diamidino-2-phenylindole (DAPI) and mounted on glass slides using ProLong Gold antifade (Life Technologies, Waltham, MA, USA) mounting medium. Fluorescent images were analyzed under an Olympus X100 confocal microscope (Olympus, Tokyo, Japan).

Generation of apical-out intestinal organoids

Growing cattle-derived intestinal organoids were cultivated in a Matrigel dome as previously described [12]. To harvest the organoids, a 10 \times volume of enzyme-free cell disassociation buffer (1 mL) was added to a Matrigel dome (100 μL) in each well and incubated for 10 min in an incubator. To generate apical-out intestinal organoids,

the organoids were then collected by centrifugation at $200 \times g$ for 5 min. The organoids were re-seeded and cultivated in ultralow-attachment 24-well plates with intestinal human organoid medium (Stem Cell Technologies) through suspension culture without Matrigel matrix. The morphology of the apical-out intestinal organoids was monitored daily under a microscope to evaluate polarity reversal [8].

Epithelial barrier permeability assay using FITC-dextran

Fluorescein isothiocyanate (FITC)-dextran (4 kDa) (Sigma-Aldrich, NY, USA) was diluted in nuclease-free water and resulted in a 1 mg/mL working solution to evaluate epithelial barrier function. Growing cattle-derived basal-out and apical-out intestinal organoids were placed in 24-well plates. Then, 25 ng/mL FITC-dextran was added to each well, and the plate was incubated under normal growth conditions. The permeability was monitored using luminal absorption and recorded at 30-min intervals for up to 3 h under a Leica CTR6000 fluorescence microscope (Leica, Wentzler, Germany). The fluorescence intensity was calculated using ImageJ software.

RNA Isolation

Total RNA was isolated from prepared samples, including intestinal organoids, using TRIzol reagent (Life Technologies, Carlsbad, CA, USA) as described previously [13, 14]. The RNA quality and quantification was assessed by an Agilent 2100 bioanalyzer using an RNA 6000 Nano Chip (Agilent Technologies, Amstelveen, The Netherlands).

Quantitative RT-PCR

Quantitative RT-PCR was performed to assess the expression of several markers regarding intestinal stem cells and epithelium in ileum and jejunum tissues and growing cattle-derived intestinal organoids. Total RNA (1 μ g) was reverse transcribed using the Superscript III First-Strand Synthesis System (Invitrogen). The PCR mixture was prepared by adding 2 μ L 10 pmol of each forward and reverse primer, 7 μ L nuclease-free water, 10 μ L SYBR Green qPCR Master Mix, and 1 μ L cDNA to a final volume of 20 μ L. PCR was performed as follows: initial incubation at 94°C for 3 min, followed by 40 cycles of 94°C for 30 s, 60°C for 30 s, and 72°C for 30 s. Sequence-specific products were identified by generating a melting curve. The Ct value represents the cycle number at which a fluorescent signal increased to a level significantly higher than the background, and relative gene expression was determined by the $2^{-\Delta\Delta Ct}$ method [15]. The qPCR primers for each target gene and 18S ribosomal RNA (rRNA) that were used as previously described (Table 2). Gene expression levels were normalized to that of bovine

18S rRNA and performed using the StepOnePlus™ Real-Time PCR System (Applied Biosystems).

Statistical Analysis

All data are expressed as the mean \pm standard error from three independent experiments. The significance between groups was analyzed by two-way ANOVA of variance or Student's t test using GraphPad Prism V 6.0 software (San Diego, CA, USA). The differences were considered statistically significant at $p < 0.05$.

Results and Discussion

Identification of intestinal stem cells from small intestine of growing cattle

First, we selected ileum and jejunum fragments from the small intestine to identify suitable sites from which to more effectively isolate intestinal crypts of growing cattle (12 months old). Intestinal ileum and jejunum tissues were histologically analyzed using hematoxylin and eosin staining to identify distinct crypt and villus structures, including intestinal stem cells. Detailed views of vertical and horizontal sections from ileum and jejunum tissues showed the integral structures of the intestinal epithelium gland, such as crypts at the bottom and finger-shaped villi on the apical side, indicating the possibility of growth potentials for derivation of intestinal organoids from both the jejunum and ileum in growing cattle (Figure 1A). In addition, to investigate the genetic properties of ileum and jejunum tissues, quantitative RT-PCR was performed. As shown in Figure 1B, intestinal stem cell-related genes, such as *LGR5* ($p < 0.01$), *Bmi1* ($p < 0.001$), *CDX2* ($p < 0.001$) [16], *HNF4A* ($p < 0.01$) [17], *FOXA3* ($p < 0.001$) [2], and *SOX9* ($p < 0.001$) [18], and intestinal epithelium-related genes, such as *MUC2* ($p < 0.001$), *Chromogranin A* ($p < 0.001$), and E-cadherin ($p < 0.001$), were expressed at significantly higher levels in the ileum than in the jejunum. Furthermore, to identify intestinal stem cells of the ileum *in vivo*, immunohistochemical analysis of several markers related to intestinal stem cells and epithelial cells was conducted. As shown in Figure 1C, the ileum of the small intestine exhibited distinct expression pattern, which included leucine-rich repeat-containing G protein-coupled receptor 5 (LGR5), which was found to be expressed with F-actin in the intestinal epithelial cytoskeleton. Moreover, the fluorescently stained villi and crypt structures showed epithelium-specific expression of MUC2 in goblet cells and E-cadherin in adherent junctions, indicating that the authenticity of intestinal stem cells and epithelium in the ileum of the small intestine in growth cattle. However, the jejunum had a relatively low expression compared to the ileum of the small intestine. Collectively, these results strongly suggested that the ileum of the small intestine had the most growth potentials for the derivation of intestinal organoids from growth cattle.

Long-term cultivation and characterization of growth cattle-derived intestinal organoids

Intestinal crypts were isolated from the small intestine (ileum and jejunum) of healthy growth cattle (12 months old), and cultivated in IntestiCult medium at Matrigel dome. Figure 2A illustrates the experimental procedure for the isolation of growth cattle-derived intestinal crypts, including the induction and cultivation of intestinal organoids. In this study, we attempted to produce intestinal organoids by isolating crypts from the jejunum and ileum of the small intestine to generate organoids specific to different regions of the small intestine. Interestingly, although there was no particular difference between the jejunum and ileum in growing cattle in terms of crypt and villus structure, intestinal organoids were confirmed to be formed by ileum (Figure 2B). However, organoid formation did not occur jejunum. According to our previous results, intestinal organoids were described to exhibit detailed structures, such as spheroidal, stomatocyte, budded/elongated and branched structures, at each passage from Day 0 to the fully mature structure observed on Day 7 [2, 19]. As shown in Figure 2B, these organoids showed various morphologies, such as spheroidal (round shaped) and mature villi and crypt-like structures, from the P1 to P10 generations at early passages. Furthermore, they showed stable growth for more than 10 passages with an average of 130-150 organoids present in the Matrigel dome at each generation, indicating the continuous proliferation and recapitulating capacity of the ileum-derived intestinal organoids (Figure 2C). These results were consistent with establishment of the jejunum-derived intestinal organoids from adult bovines [2]. To more characterize the cellular potential of the ileum-derived intestinal organoids (P5) in growing cattle, we investigated the spatial expression of several specific markers of intestinal stem cells and the epithelium. Intestinal organoids do not consist of only one cell but consist of various cells, such as stem cells, Paneth cells, and intestinal endocrine cells [10, 20]. Consistent with previous results [2], the ileum-derived intestinal organoids had distinct patterns of gene expression, such as *LGR5* and *Bmi1* expression. Moreover, the fluorescently stained organoids showed epithelium-specific expression of *Mucin2* in goblet cells, which contributes to epithelial barrier integrity, *E-cadherin* in adherent junctions, *F-actin* in the intestinal epithelial cytoskeleton, *Chromogranin A* in enteroendocrine cells, and *Cytokeratin 19* in enterocytes, suggesting that the organoids closely mimicked the *in vivo* organ physiology (Figure 3A). In addition, we investigated the genetic expression patterns of the ileum-derived intestinal organoids through expression profiling. As shown in Figure 3B, the expression of intestinal stem cell-related genes, such as *LGR5* ($p < 0.001$), was significantly higher in the ileum-derived intestinal organoids on Day 0 than on Day 3 and Day 6, while the expression of intestinal stem cell-related genes, such as *Bmi1* ($p < 0.05$), *CDX2* ($p < 0.05$), *HNF4A* ($p < 0.05$) and *SOX9* ($p < 0.05$), was significantly higher in the ileum-

derived intestinal organoids on Day 3 than on Day 0 and Day 6. In addition, the expression of intestinal epithelial markers, such as *MUC2* ($p < 0.001$), *Chromogranin A* ($p < 0.05$) and *E-cadherin* ($p < 0.01$) was significantly higher in the ileum-derived intestinal organoids on Day 6 than on Day 0 or Day 3. Moreover, the expression of intestinal epithelial markers, such as *Chromogranin A* ($p < 0.001$) and *E-cadherin* ($p < 0.001$) was specifically expressed in the ileum-derived intestinal organoids on Day 6 than bovine embryonic fibroblast (BEF) (Figure 1S). This confirmed the development and differentiation of intestinal stem cells into intestinal organoids over time. Taken together, these results demonstrated that the genetic expression patterns and cellular potentials of the ileum-derived intestinal organoids were highly similar to those observed *in vivo*.

Generation of apical-out intestinal organoids and assessment of their epithelial barrier permeability

Recently, intestinal organoids have been considered potential alternatives to *in vivo* systems and have become the focus of research about livestock, including cattle, pig and chicken [1, 11, 21, 22]. In particular, intestinal organoids have been described as the ideal model of mucosal permeability since they that can model the absorption of bacteria, viruses, and nutrients [7, 9, 23-26]. However, there are practical limitations associated with the potential use of intestinal organoids, such as host-pathogen interactions and nutrient absorption, because intestinal organoids cultivated in Matrigel have all basal-out structures [8-10]. To overcome the limitations of current growing cattle-derived basal-out intestinal organoid models cultivated in Matrigel matrices, we generated apical-out intestinal organoids through suspension culture without Matrigel matrix, showing that these organoids exhibited an apical-out membrane on their surfaces (Figure 4A). From our results, on day 3 of culture in suspension without the Matrigel matrix, the apical-out form began to emerge. In addition, we investigated the spatial expression of a specific marker, F-actin, associated with epithelial characteristics in apical-out-derived intestinal organoids derived from growing cattle. Based on our results, it was confirmed that F-actin was strongly expressed on the surface, showing that intestinal epithelial cells were inverted and formed differently compared with those observed in basal-out organoids (Figure 4A). The intestinal epithelium plays an important role in the absorption of nutrients through the membrane and diffusion of small molecules across the intestinal barrier [27, 28]. Furthermore, we tested the paracellular permeability of the epithelial layer using fluorescent tracers. We previously reported that FITC-dextran 4 kDa did not reach the apical surface of bovine intestinal organoids due to their basal-out structures [2]. Generally, intestinal pathogens penetrate the apical membrane of intestinal epithelial cells [8]. However, apical-out bovine intestinal organoids overcame this limitation. Markedly, they showed the key functionality with regard to a high permeability for compounds up to FITC-dextran 4 kDa in size,

while FITC-dextran 40 kDa failed to enter the organoid lumen because of intestinal epithelial barrier integrity. In addition, when the fluorescence of the apical-out and the basal-out structure were compared, it was confirmed that the transmittance of the apical-out structure was significantly higher and were better than other models (Figure 4B and 4C), indicating apical-out intestinal organoids is the best model to study for various purposes. Together, these functional testing results suggested that apical-out intestinal organoids were physiologically relevant and exhibited properties similar to those of the gut *in vivo*. Finally, these novel organoids may be useful for evaluating nutrient absorption capacity and in experiments on intestinal epithelial cells.

Conclusion

In this study, we successfully established the ileum-derived intestinal organoids from growing cattle and generated a more reliable research model for intestinal organoids by producing organoids with apical-out structures and characterized their cellular potentials. Growing cattle-derived intestinal organoids have potential for use in various purposes in the field of animal biotechnology, such as disease modeling and feed efficiency measurement.

Acknowledgements

This work was supported by the National Institute of Animal Science (Grant No. PJ01422201) and the collaborative research program between University (2022), Rural Development Administration (RDA), Korea.

Authors' contributions

Conceptualization, B.R.L.; Methodology, Data Curation and Formal Analysis, B.R.L., K.W.P., H.Y., M.G.L., H.W., S.A.O., P.L., I.S.H., J.G.Y., C.K.P.; Writing-Original Draft Preparation, B.R.L., K.W.P.; Supervision, P.L., J.G.Y., C.K.P.; Funding Acquisition and Project Administration, B.R.L. All authors have read and agreed to the published version of the manuscript.

Ethical Approval

The experimental use of Hanwoo cattle was approved by the Institutional Animal Care and Use Committee (IACUC) of the National Institute of Animal Science (NIAS-2019-366), Korea.

Data Availability Statement

The datasets during and/or analyzed during the current study are available from the corresponding authors upon reasonable request.

Conflicts of Interest

The authors declare that they have no competing interests.

ACCEPTED

Figure legends

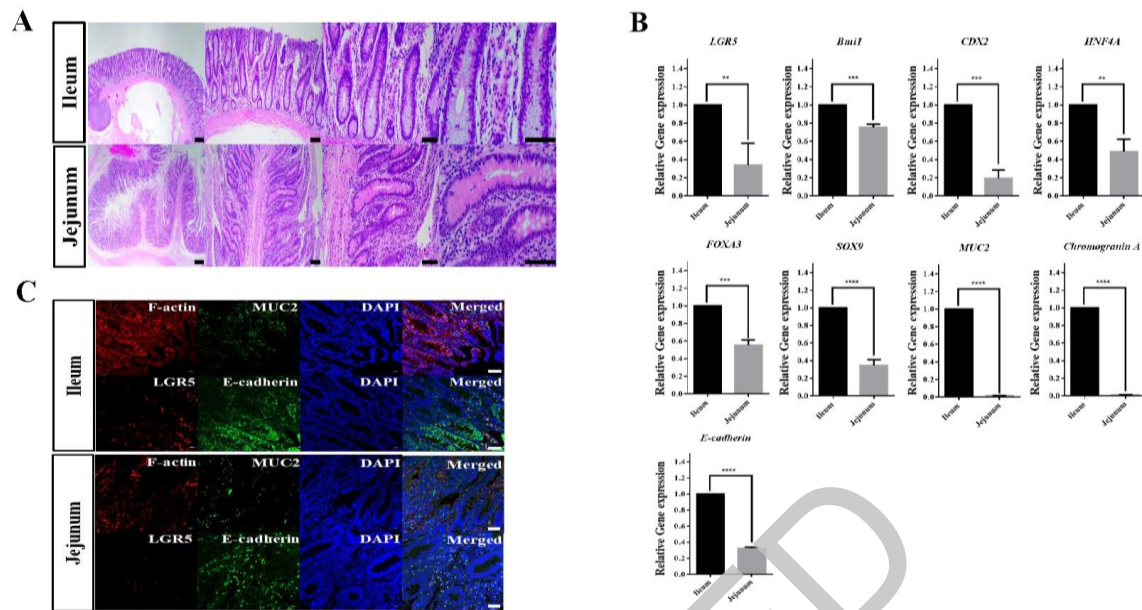


Figure 1. Identification of intestinal stem cells in small intestine of growing cattle.

(A) Hematoxylin and eosin staining of distinct crypt and villus structures, including intestinal stem cells, in the jejunum and ileum of the small intestine of growing cattle. Scale bar: #1: 40 μ m, #2: 100 μ m, #3: 200 μ m, #4: 400 μ m. (B) Gene expression profiling of jejunum and ileum tissues from the small intestine of growing cattle using quantitative RT-PCR. Quantitative RT-PCR was performed to evaluate the gene expression of jejunum and ileum tissues using several markers of intestinal stem cells (*LGR5*, *Bmi1*, *CDX2*, *SOX9*, *HNF4A* and *FOXA3*) and epithelium (*MUC2*, *Chromogranin A* and *E-cadherin*). Gene expression was normalized to that of 18S rRNA and analyzed by the $2^{-\Delta\Delta Ct}$ method. Significant differences between groups were analyzed by Student's t test. A *p* value less than or equal to 0.05 indicated statistical significance (**p* value \leq 0.05, ***p* value \leq 0.01, ****p* value \leq 0.001). (C) Immunohistochemical staining of LGR5, MUC2, F-actin and E-cadherin in the jejunum and ileum of the small intestine in growing cattle. The fluorescently stained crypts were counterstained with diamidino-2-phenylindole (DAPI). Scale bar: 200 μ m.

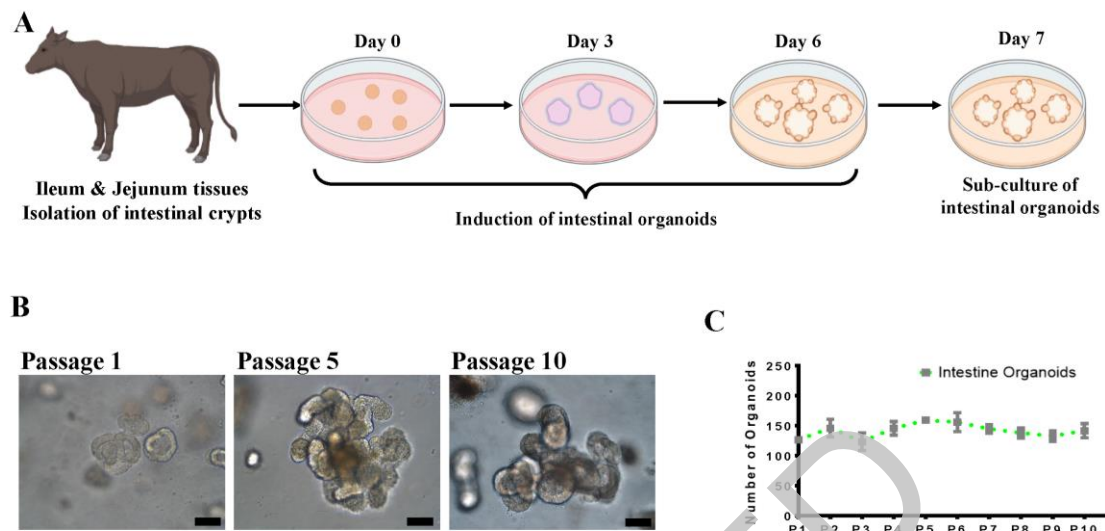


Figure 2. Isolation of intestinal crypts and three-dimensional (3D) cultivation of intestinal crypts, including intestinal stem cells, from growing cattle.

(A) Experimental procedures for the isolation of intestinal crypts from the small intestine (ileum and jejunum) and the three-dimensional (3D) cultivation of intestinal crypts, including intestinal stem cells, from growing cattle. This figure was created with BioRender.Com. (B) 3D expansion of intestinal crypts, including intestinal stem cells, from growing cattle. These organoids showed various morphologies, such as spheroidal (round shaped), mature villi and crypt-like structures, from the P1 to P10 generations at early passages. Scale bar: 50 μ m. (C) Growth rate of growing cattle-derived intestinal organoids showing the number of organoids/well (mean $n = 3$ wells) cultured in a 100 μ L Matrigel dome in each well. Growing cattle-derived intestinal organoids were maintained for up to 10 generations without losing the ability to recapitulate the crypts or continuous proliferation observed *in vivo*.

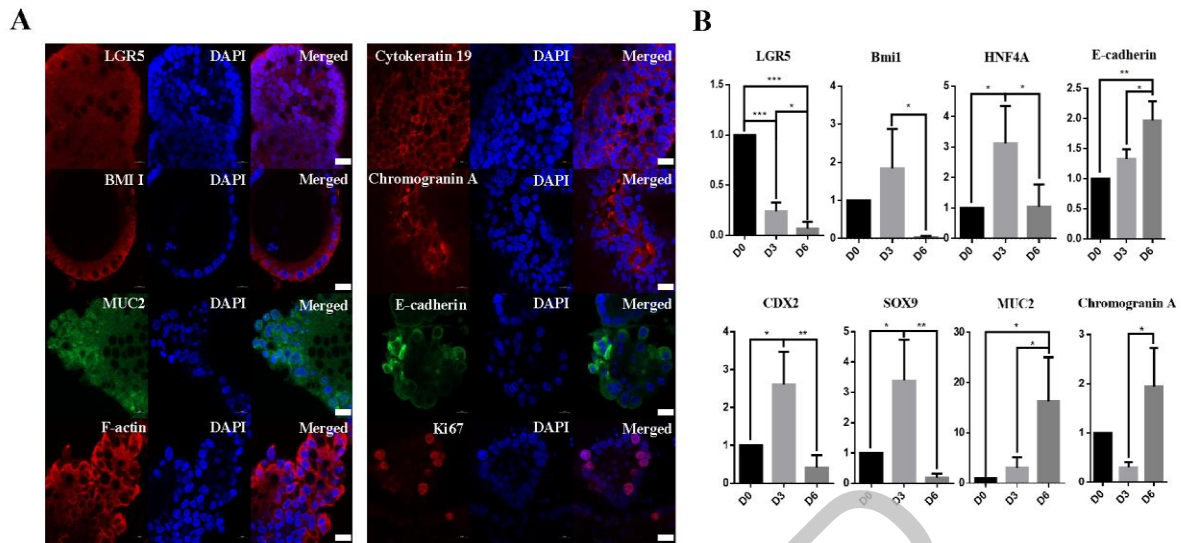


Figure 3. Characterization and gene expression profiling of growing cattle-derived intestinal organoids

(A) Immunostaining of several intestinal organoid markers, such as intestinal stem cell markers (LGR5, BMI1 and Ki67) and epithelial markers (MUC2, Chromogranin A, E-cadherin, F-actin and Cytokeratin 19), in growing cattle-derived intestinal organoids on Day 6. The organoids were counterstained with DAPI. Scale bar: 10 μ m. (B) The expression of intestinal stem cell-related genes, such as LGR5 ($p < 0.001$), was significantly higher in growing cattle-derived intestinal organoids on Day 0 than on Day 3 and Day 6, while the expression of intestinal stem cell-related genes, such as *Bmi1* ($p < 0.05$), *CDX2* ($p < 0.05$), *HNF4A* ($p < 0.05$) and *SOX9* ($p < 0.05$), was significantly higher in growing cattle-derived intestinal organoids on Day 3 than on Day 0 and Day 6. In addition, the expression of intestinal epithelial markers, such as *MUC2* ($p < 0.001$), *Chromogranin A* ($p < 0.05$) and *E-cadherin* ($p < 0.01$) was significantly higher in growing cattle-derived intestinal organoids on Day 6 than on Day 0 and Day 3. Gene expression was normalized to that of 18S rRNA and analyzed by the $2^{-\Delta\Delta Ct}$ method. One-way ANOVA and Student's t test were used to analyze significant differences. (* p value ≤ 0.05 , ** p value ≤ 0.01 , *** p value ≤ 0.001).

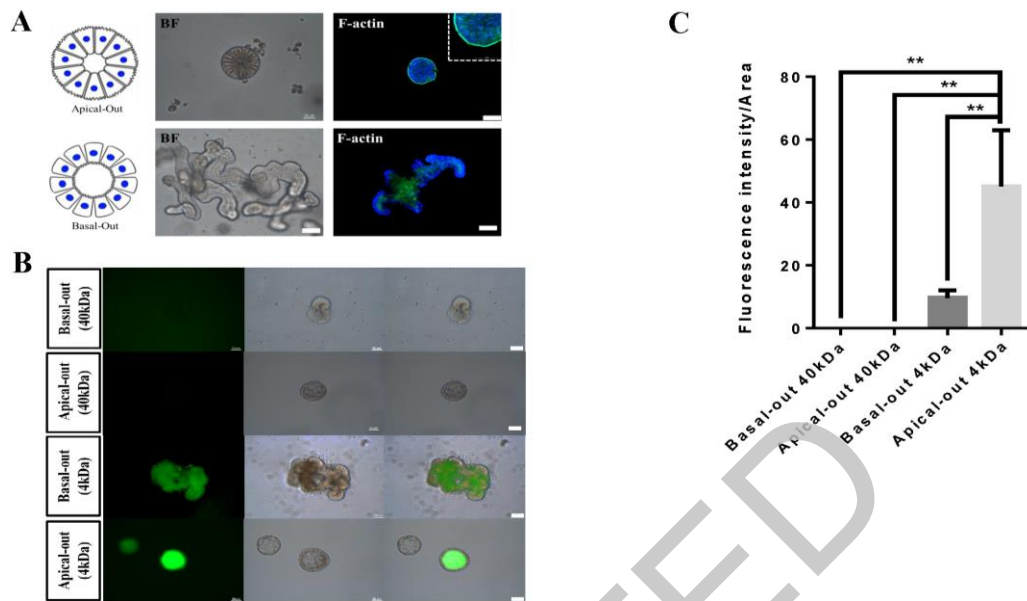


Figure 4. Generation of apical-out intestinal organoids and assessment of paracellular permeability of growing cattle-derived intestinal organoids

(A) Apical-out organoids were formed without Matrigel after 3 days of suspension culture. Scale bar: 25 μ m. Images of stained organoids; nuclei and F-actin were stained with DAPI and an antibody, respectively. Immunostaining showed that the epithelium of apical-out organoids was inverted compared to basal-out organoids. Scale bar: 50 μ m. (B) Assessment of paracellular permeability of the epithelial layers of basal-out and apical-out organoids using fluorescent staining. Intestinal organoids were stained with FITC-dextran to evaluate barrier function. The organoids exhibited better permeability for FITC-dextran 4 kDa than FITC-dextran 40 kDa. (C) ImageJ software was used to analyze the fluorescence intensity of each organoid. One-way ANOVA and Student's t test were analyzed by fluorescent intensity (* p value ≤ 0.05 , ** p value ≤ 0.01 , *** p value ≤ 0.001).

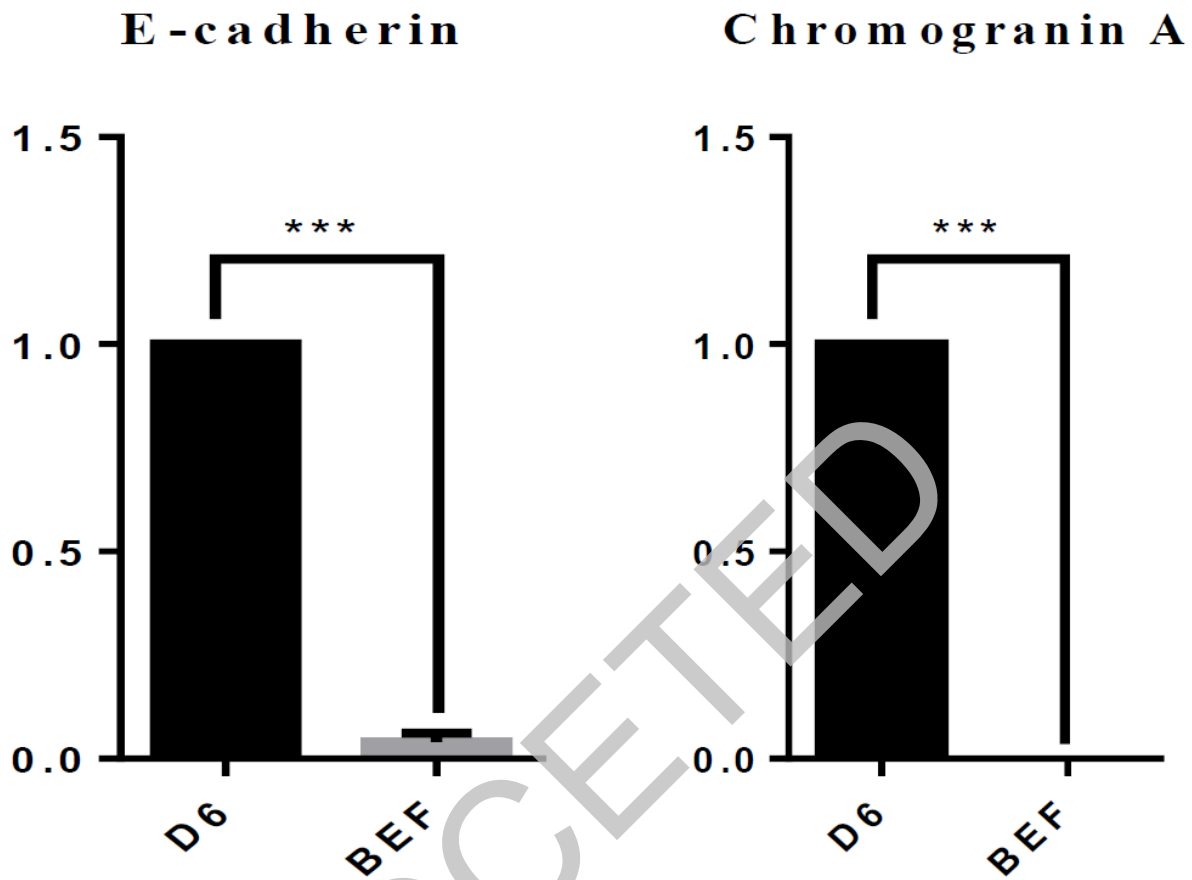


Figure S1. Investigation on comparison of the expression of intestinal epithelial markers

The expression of intestinal epithelial markers, such as *Chromogranin A* ($p < 0.001$) and *E-cadherin* ($p < 0.001$) was specifically expressed in the ileum-derived intestinal organoids on Day 6 than bovine embryonic fibroblast (BEF). Gene expression was normalized to that of 18S rRNA and analyzed by the $2^{-\Delta\Delta C_t}$ method. One-way ANOVA and Student's t test were used to analyze significant differences. (* p value ≤ 0.05 , ** p value ≤ 0.01 , *** p value ≤ 0.001).

Table 1. Antibodies used for characterization of growing cattle-derived intestinal organoids.

Antibody	Host species	Company (Catalog No.)
LGR5	Mouse	Origene Technologies, Inc. (TA503316)
Bmi1	Rabbit	abcam (ab38295)
Mucin2	Mouse	Santan Cruz Biotechnology, Inc. (SC-515032)
E-cadherin	Mouse	BD Biosciences (61081)
F-actin	Rabbit	abcam (ab83746)
Chromogranin A	Rabbit	abcam (ab85554)
Cytokeratin 19	Rabbit	abcam (ab84632)
Ki67	Rabbit	Cell Signaling Technology (9123)

Table 2. Primers used for the gene expression analysis of growing cattle-derived intestinal organoids.

Gene Name	Forward	Reverse
<i>18S rRNA</i>	AAACGGCTACCACATCCAAG	CCTCCAATGGATCCTCGTTA
<i>LGR5</i>	GTGTTTCAGAGCCGCAGTGTA	GATTCCGAAGCAAAAATGCA
<i>Bmi1</i>	TTCATTGATGCCACAACCAT	CAGCATCAGCTGAAGGATGA
<i>CDX2</i>	CATCACCTCACCACCATCC	GTTTTCACTTGGCTGCCCAG
<i>SOX9</i>	TTCATGAAGATGACCGACGA	GTCCAGTCGTAGCCCTTGAG
<i>FOXA3</i>	GCAAGATGCTTACCCTGAGC	AGGTAGCAGCCGTTCTCAA
<i>HNF4A</i>	CGAGCAGATCCAGTTCATCA	GAAGGCTGTGGAGTCTCAGG
<i>MUC2</i>	TTCGACGGGAGGAAGTACAC	TTCACCGTCTGCRTCATTGAG
E-cadherin	CCAGGTGACCACACTTGATG	ATACACATTGTCCCGGGTGT
Chromogranin A	TATCAATCCTGCGACATCAG	CTGTCTCCGTCCGAGTCTTC

REFERENCES

1. Haq I, Yang H, Ock S-A, Wi H-Y, Park K-W, Lee P-Y, et al. Recent Progress and Future Perspectives on Intestinal Organoids in Livestock. *Agriculture & Life Science*. 2021;55(5):83-90.
2. Lee B-R, Yang H, Lee S-I, Haq I, Ock S-A, Wi H, et al. Robust three-dimensional (3D) expansion of bovine intestinal organoids: An in vitro model as a potential alternative to an in vivo system. *Animals*. 2021;11(7):2115.
3. Huh D, Hamilton GA, Ingber DE. From 3D cell culture to organs-on-chips. *Trends in cell biology*. 2011;21(12):745-54.
4. Powell RH, Behnke MS. WRN conditioned media is sufficient for in vitro propagation of intestinal organoids from large farm and small companion animals. *Biology Open*. 2017;6(5):698-705.
5. Pierzchalska M, Panek M, Czyrnek M, Gielicz A, Mickowska B, Grabacka M. Probiotic *Lactobacillus acidophilus* bacteria or synthetic TLR2 agonist boost the growth of chicken embryo intestinal organoids in cultures comprising epithelial cells and myofibroblasts. *Comparative immunology, microbiology and infectious diseases*. 2017;53:7-18.
6. Stewart AS, Freund J, Gonzalez L. Advanced three-dimensional culture of equine intestinal epithelial stem cells. *Equine veterinary journal*. 2018;50(2):241-8.
7. Rallabandi HR, Yang H, Oh KB, Lee HC, Byun SJ, Lee BR. Evaluation of intestinal epithelial barrier function in inflammatory bowel diseases using murine intestinal organoids. *Tissue Engineering and Regenerative Medicine*. 2020;17(5):641-50.
8. Li Y, Yang N, Chen J, Huang X, Zhang N, Yang S, et al. Next-generation porcine intestinal organoids: an apical-out organoid model for swine enteric virus infection and immune response investigations. *Journal of Virology*. 2020;94(21):e01006-20.
9. Wilson SS, Tocchi A, Holly MK, Parks WC, Smith JG. A small intestinal organoid model of non-invasive enteric pathogen–epithelial cell interactions. *Mucosal immunology*. 2015;8(2):352-61.
10. Takeda N, Jain R, LeBoeuf MR, Wang Q, Lu MM, Epstein JA. Interconversion between intestinal stem cell populations in distinct niches. *Science*. 2011;334(6061):1420-4.
11. Beaumont M, Blanc F, Cherbuy C, Egidy G, Giuffra E, Lacroix-Lamande S, et al. Intestinal organoids in farm animals. *Vet Res*. 2021;52(1):33.
12. Park KW, Yang H, Wi H, Ock SA, Lee P, Hwang I-S, et al. Effect of Wnt signaling pathway activation on the efficient generation of bovine intestinal organoids. *Journal of Animal Reproduction and Biotechnology*. 2022;37(2):136-43.
13. Lee BR, Kim H, Park TS, Moon S, Cho S, Park T, et al. A set of stage-specific gene transcripts identified in EK stage X and HH stage 3 chick embryos. *BMC Developmental Biology*. 2007;7(1):1-11.
14. Lee BR, Rengaraj D, Choi HJ, Han JY. A novel F-box domain containing cyclin F like gene is required for maintaining the genome stability and survival of chicken primordial germ cells. *The FASEB Journal*. 2020;34(1):1001-17.
15. Livak KJ, Schmittgen TD. Analysis of relative gene expression data using real-time quantitative PCR and the 2⁻ΔΔCT method. *methods*. 2001;25(4):402-8.
16. Simmini S, Bialecka M, Huch M, Kester L, Van De Wetering M, Sato T, et al. Transformation of intestinal stem cells into gastric stem cells on loss of transcription factor Cdx2. *Nature communications*. 2014;5(1):1-10.
17. Chen L, Vasoya RP, Toke NH, Parthasarathy A, Luo S, Chiles E, et al. HNF4 regulates fatty acid oxidation and

- is required for renewal of intestinal stem cells in mice. *Gastroenterology*. 2020;158(4):985-99. e9.
18. Formeister EJ, Sionas AL, Lorance DK, Barkley CL, Lee GH, Magness ST. Distinct SOX9 levels differentially mark stem/progenitor populations and enteroendocrine cells of the small intestine epithelium. *American Journal of Physiology-Gastrointestinal and Liver Physiology*. 2009;296(5):G1108-G118.
 19. Rozman J, Krajnc M, Zihel P. Collective cell mechanics of epithelial shells with organoid-like morphologies. *Nature communications*. 2020;11(1):1-9.
 20. Montgomery RK, Breault DT. Small intestinal stem cell markers. *Journal of Anatomy*. 2008;213(1):52-8.
 21. Hoffmann P, Schnepel N, Langeheine M, Künnemann K, Grassl GA, Brehm R, et al. Intestinal organoid-based 2D monolayers mimic physiological and pathophysiological properties of the pig intestine. *PloS one*. 2021;16(8):e0256143.
 22. Derricott H, Luu L, Fong WY, Hartley CS, Johnston LJ, Armstrong SD, et al. Developing a 3D intestinal epithelium model for livestock species. *Cell and tissue research*. 2019;375(2):409-24.
 23. Zhang YG, Wu S, Xia Y, Sun J. Salmonella-infected crypt-derived intestinal organoid culture system for host–bacterial interactions. *Physiological reports*. 2014;2(9):e12147.
 24. Forbester JL, Goulding D, Vallier L, Hannan N, Hale C, Pickard D, et al. Interaction of *Salmonella enterica* serovar Typhimurium with intestinal organoids derived from human induced pluripotent stem cells. *Infection and immunity*. 2015;83(7):2926-34.
 25. Saxena K, Blutt SE, Ettayebi K, Zeng X-L, Broughman JR, Crawford SE, et al. Human intestinal enteroids: a new model to study human rotavirus infection, host restriction, and pathophysiology. *Journal of virology*. 2016;90(1):43-56.
 26. Rahmani S, Breyner NM, Su HM, Verdu EF, Didar TF. Intestinal organoids: A new paradigm for engineering intestinal epithelium in vitro. *Biomaterials*. 2019;194:195-214.
 27. Farré R, Fiorani M, Abdu Rahiman S, Matteoli G. Intestinal permeability, inflammation and the role of nutrients. *Nutrients*. 2020;12(4):1185.
 28. Zietek T, Rath E, Haller D, Daniel H. Intestinal organoids for assessing nutrient transport, sensing and incretin secretion. *Scientific reports*. 2015;5(1):1-10.