

Transcriptome-wide analysis reveals gluten-induced suppression of small intestine development in young chickens

Darae Kang^{1#}, Donghyun Shin^{2#}, Hosung Choe¹, Doyon Hwang³, Andrew Wange Bugenyi^{2,4}, Chong-Sam Na¹, Hak-Kyo Lee¹, Jaeyoung Heo^{1*} and Kwanseob Shim^{1*}

¹Department of Animal Biotechnology, Jeonbuk National University, Jeonju 54896, Korea

²Department of Agricultural Convergence Technology, Jeonbuk National University, Jeonju 54896, Korea

³Institute for Animal Products Quality Evaluation, Sejong 339011, Korea

⁴National Agricultural Research Organization, Entebbe 295, Uganda



Received: Dec 10, 2021

Revised: Apr 15, 2022

Accepted: May 22, 2022

#These authors contributed equally to this work.

*Corresponding author

Jaeyoung Heo

Department of Animal Biotechnology, Jeonbuk National University, Jeonju 54896, Korea.

Tel: +82-63-270-2549

E-mail: jyheo@jbnu.ac.kr

Kwanseob Shim

Department of Animal Biotechnology, Jeonbuk National University, Jeonju 54896, Korea.

Tel: +82-63-270-2609

E-mail: ksshim@jbnu.ac.kr

Copyright © 2022 Korean Society of Animal Sciences and Technology. This is an Open Access article distributed under the terms of the Creative Commons Attribution Non-Commercial License (<http://creativecommons.org/licenses/by-nc/4.0/>) which permits unrestricted non-commercial use, distribution, and reproduction in any medium, provided the original work is properly cited.

ORCID

Darae Kang

<https://orcid.org/0000-0002-1659-4427>

Donghyun Shin

<https://orcid.org/0000-0002-0819-0553>

Abstract

Wheat gluten is an increasingly common ingredient in poultry diets but its impact on the small intestine in chicken is not fully understood. This study aimed to identify effects of high-gluten diets on chicken small intestines and the variation of their associated transcriptional responses by age. A total of 120 broilers (Ross Strain) were used to perform two animal experiments consisting of two gluten inclusion levels (0% or 25%) by bird's age (1 week or 4 weeks). Transcriptomics and histochemical techniques were employed to study the effect of gluten on their duodenal mucosa using randomly selected 12 broilers (3 chicks per group). A reduction in feed intake and body weight gain was found in the broilers fed a high-gluten containing diet at both ages. Histochemical photomicrographs showed a reduced villus height to crypt depth ratio in the duodenum of gluten-fed broilers at 1 week. We found mainly a significant effect on the gene expression of duodenal mucosa in gluten-fed broilers at 1 week (289 differentially expressed genes [DEGs]). Pathway analyses revealed that the significant DEGs were mainly involved in ribosome, oxidative phosphorylation, and peroxisome proliferator-activated receptor (PPAR) signaling pathways. These pathways are involved in ribosome protein biogenesis, oxidative phosphorylation and fatty acid metabolism, respectively. Our results suggest a pattern of differential gene expression in these pathways that can be linked to chronic inflammation, suppression of cell proliferation, cell cycle arrest and apoptosis. And via such a mode of action, high-gluten inclusion levels in poultry diets could lead to the observed retardation of villi development in the duodenal mucosa of young broiler chicken.

Keywords: Transcriptome, RNA sequencing, Small intestines, Gluten, Chicken

INTRODUCTION

Wheat is one of the most important cereal crops, with a global production comparable only to maize

Hosung Choe
<https://orcid.org/0000-0002-1973-3568>
 Doyon Hwang
<https://orcid.org/0000-0003-2845-5093>
 Andrew Wange Bugenyi
<https://orcid.org/0000-0001-9036-8391>
 Chong-Sam Na
<https://orcid.org/0000-0002-8979-5633>
 Hak-Kyo Lee
<https://orcid.org/0000-0001-5387-4885>
 Jaeyoung Heo
<https://orcid.org/0000-0002-9721-8043>
 Kwanseob Shim
<https://orcid.org/0000-0002-4996-3700>

Competing interests

No potential conflict of interest relevant to this article was reported.

Funding sources

This work was supported by a grant from the Next-Generation BioGreen 21 Program (No. PJ011831 and PJ013151), Rural Development Administration, Korea.

Acknowledgements

Not applicable.

Availability of data and material

Upon reasonable request, the datasets of this study can be available from the corresponding author.

Authors' contributions

Methodology: Lee HK, Heo J, Shim K.
 Investigation: Choe H, Hwang D, Bugenyi AW, Na CS.
 Writing - original draft preparation: Kang D, Shin D.
 Writing - review and editing: Kang D, Shin D, Choe H, Hwang D, Bugenyi AW, Na CS, Lee HK, Heo J, Shim K.

Ethics approval and consent to participate

This study was approved by the Animal Ethics Committee of Jeonbuk National University, Korea (CBNU-2017-00101).

and rice [1]. This in addition to its value as an energy source [2] has made wheat a common ingredient in poultry rations. Although largely composed of starch, the wheat grain contains approximately 10% protein [3,4] and of this, up to 80% is contributed by gluten proteins [5,6].

Wheat gluten proteins are a complex mixture of hundreds of proteins that can be grouped into two approximately equal fractions; gliadins and glutenins [7]. These proteins are also members of the prolamins superfamily of plant proteins which is characterized by a high content of proline and glutamine amino acid residues [7]. When hydrated, gluten proteins confer the rheological properties that make dough good for making bread, biscuits, pasta and as a binder in many processed foods. The viscosity and extensibility of the dough is contributed mostly by the gliadins, while its strength and elasticity come largely from the glutenins [7,8].

Although widely used in human food products, gluten is potentially toxic to some genetically predisposed individuals causing conditions collectively referred to as gluten intolerance. These conditions include; autoimmune celiac disease [9], wheat allergy and non-celiac gluten sensitivity [10]. The high content of proline and glutamine renders the prolamins in gluten partially resistant to hydrolytic action of pancreatic and intestinal proteases [11]. This results in the accumulation of partially hydrolyzed long polypeptide chains that are highly immunostimulatory. The gliadins are also known to induce intestinal permeability through upregulation of zonulin, which breaks down the intestinal epithelial tight junctions [12]. As a result, the peptides reach the lamina propria where their glutamine residues are selectively converted into glutamic acid in a deamidation reaction catalyzed by tissue transglutaminase 2 (tTG2) [13]. The deamidated peptides have an increased negative charge that promotes binding to the specific human leucocyte antigen (HLA-DQ2 or HLA-DQ8) [14]. These peptide-DQ complexes are even more immunostimulatory thus leading to inflammation of the intestinal lining as seen in genetically predisposed patients (those with the DQ2/8 molecules) [15].

Sensitivity to gluten is not restricted to humans; varying forms of gluten-dependent enteropathies have been reported in rhesus macaques [16], dogs [17], horses [18], and mice [19]. Although, gluten sensitivity has not been reported in monogastric pigs and poultry, several studies have evaluated its effect as an ingredient in feed. Most of these studies have focused on the effect of wheat gluten on performance [20–22], involvement in disease [23] and gut health [24–26]. To the best of our knowledge, no study has been done on the impact of gluten on the physiology of the chicken intestinal tract.

RNA-Sequencing is a sequencing methodology which uses next-generation sequencing to reveal the presence and quantity of mRNA in a biological sample, analyzing the continuously changing cellular transcriptome [27]. This method can detect transcripts from any organisms with previously undetermined genomic sequences and allows for accurate quantification of RNA. So, this study therefore aimed to study the impact of a high gluten diet on intestinal morphology of starter and grower broilers as well as the host response to such a diet through transcriptomic techniques (RNA-seq). We hypothesized that a gluten-rich diet affected intestinal development differently between young (1-week-old) and older (4-week-old) chicks.

MATERIALS AND METHODS

Use of chicken for experiments

This study was approved by the Animal Ethics Committee of Jeonbuk National University, Korea (CBNU-2017-00101).

Experimental design and sample collection

A total of 120 one-day-old broilers (Ross Strain) were used in this study (Dongwoo Hatchery, Iksan, Korea) to employ a two-level general factorial design to investigate the gluten intervention by bird age. As described in the Supplementary Fig. S1, birds were divided into 4 groups by different gluten feeding age (1 week or 4 weeks) and gluten inclusion level (0% or 25%). The broilers were allowed ad libitum access to water and feed under light on all days. Starter and grower broiler feeds were purchased from TS Corporation (Seoul, Korea) which compositions were reported in our previous study [28], and pure wheat gluten was obtained from Singsong Food (Nonsan, Korea). During gluten feeding challenges, the control group was allowed access to a 100% broiler feed (this was considered the wheat gluten-free diet) while the gluten-fed group was allowed a feed containing 25% gluten (i.e., 75% broiler feed + 25% gluten supplement). At the end of each gluten challenge, 6 birds (3 controls and 3 gluten-fed) were randomly selected and euthanized by cervical decapitation and duodenum samples collected, respectively. A total of 12 samples for histological examination were fixed with 10% neutral buffered formalin (NBF) while samples for RNA sequencing were immediately frozen in liquid nitrogen and stored at -70°C until analysis. Birds and feed were weighed to calculate feed intake and body weight during gluten feeding challenges to compare growth performance among groups.

Histochemical staining

Fixed duodenum samples from the experimental chickens were sectioned and embedded into paraffin blocks. The paraffin-embedded tissue blocks were sectioned at $5\ \mu\text{M}$, de-paraffinized in xylene and hydrated in a descending series of ethanol and then stained with hematoxylin and eosin (HE) for histological examination. Stained sections were dehydrated in an ascending series of ethanol, cleared in xylene and mounted on slide. Digital images were acquired using a Leica DM2500 microscope (Leica Microsystems, Wetzlar, Germany) at fixed $100\times$ magnification.

RNA sequencing and library preparation

RNAs were isolated from duodenum mucosal samples from 12 chickens using TRIzol reagent (Invitrogen, Waltham, MA, USA) for constructing RNA-seq libraries using TruSeq Stranded mRNA Sample Preparation Kit (Illumina, San Diego, CA, USA) according to the manufacturer's guidelines. Library quality (size distribution and concentration) was checked using Agilent Technologies 2100 Bioanalyzer. In order to check library quality, we loaded $1\ \mu\text{L}$ of sample on DNA 1000 Bioanalyzer LabChip and selected 150–200 bp size. Libraries with different indexes were pooled and sequenced in one lane using Illumina NextSeq 500 high-throughput sequencing instrument with 75 paired-end (PE) reads. An average of 17.01 million sequencing reads per sample were generated. Sequencing data were deposited at Sequence Read Archive (SRA) with project number PRJNA488337.

Alignment of raw reads to chicken transcriptome

After obtaining RNA-sequencing data, raw reads were preprocessed for quality control using Trimmomatic-0.36 (trimming read and LEADING:3 TRAILING:3 SLIDINGWINDOW:4:15 MINLEN:36). Subsequently, we obtained chicken reference genome (*Gallus_gallus*-5.0) from Ensemble database. We performed the indexing process based on the chicken reference genome. Reads were aligned with this chicken genome using HISAT2 (version 2.1.0) [29], a fast and sensitive alignment tool for mapping next-generation sequencing reads. The aligned sequence reads and mapping rate of small intestine samples from all twelve chickens are presented in Supplementary Table S1. These aligned chicken sequence reads were then used for downstream

analyses of host differential expression.

Host gene expression

After we obtained chicken genome GTF file (*Gallus_gallus-5.0.9*) from the Ensemble database, we counted the number of reads for each gene using FEATURECOUNT [30] (version 1.5.3) within the subread aligner packages [31]. Based on the assumption that the number of RNA-Seq reads produced by a transcript is directly proportional to its abundance, we measured gene expression level based on read count.

In this study, we used DESeq2 (version 1.18.1) [32], a package in R [33] to identify differentially expressed genes (DEGs) between gluten-fed and non-gluten-fed broilers at 1 week and 4 weeks of age. To enhance the statistical power for identifying DEGs, we removed genes with weak expression levels using HTSFilter package [34]. First, DESeq2 used empirical Bayes shrinkage method to estimate dispersions and fold changes by modeling read counts following a Negative Binomial distribution. Then Wald test p -value was inferred to evaluate the statistical significance. The estimated p -values were adjusted using the False Discovery Rate (FDR) method to control for multiple hypothesis testing as is typical in RNA-Seq datasets. Finally, DEGs were declared at a significant level of $|\log_2(\text{fold change})| > 2$ and $\text{FDR} < 0.05$. Chicken Ensemble gene IDs were converted into official gene symbols by cross matching to chicken and human Ensemble gene IDs. And then, we used several plotting methods (density plot, scatter plot and principal component analysis [PCA] plot) to identify the quality of RNA-seq as well as relationships between non-gluten and gluten-fed chickens using DESeq2 [32], ggplot2 [35] and affy [36] R packages. We also performed a heatmap clustering analysis was performed on the DEGs using ggplot2 [35] in order to further identify expression patterns among the groups. The official gene symbols of chicken genes were then used for functional clustering and enrichment analyses using WebGestalt [37]. Representative functional groups in the compared treatments (gluten and non-gluten fed chicken) at 1 week of age were investigated using gene ontology (biological process, cellular component, molecular function) information and Kyoto Encyclopedia of Genes and Genomes (KEGG) pathways. To identify enriched pathways, functionally clustered genes were clustered using overrepresentation enrichment analysis (ORA) method and KEGG pathway database.

Validation of host differentially expressed genes through quantitative real-time polymerase chain reaction analysis

In order to verify the DEG's from our transcriptome analysis (RNA-seq data), we used a quantitative real-time PCR to detect the expression pattern of 4 of the DEG's between the gluten-fed and control groups at 1 week of age. Two of the selected genes (FABP6, SCD) were associated with a KEGG pathway whose differential expression showed statistical significance and the other 2 DEG's (PRDX1 and IRAK1BP1) were randomly selected. For the qRT-PCR, we used samples from 6 one-week old broilers (three individuals from the control group and three individuals from the gluten-fed group). The primers used are presented in Supplementary Table S2. To synthesize cDNA, ReverTra Ace (Toyobo, Osaka, Japan) was used according to manufacturer's instructions. Real-time qPCR was performed using iTaq Universal SYBR Green Supermix (Bio Rad, Hercules, CA, USA) according to the manufacturer's instructions. PCR reaction consisted of the following: 1 μL of diluted cDNA, 5 μL of iTaq Universal SYBR Green Supermix, and 1 μL each of 5 pmol/ μL diluted forward and reverse primers. C1000 Thermal Cycler (Bio Rad) was used to measure the expression level of target gene. Conditions used for real-time qPCR were as follows: incubation at 95°C for 5 minutes followed by 40 cycles of denaturation at 95°C for 10 seconds and annealing at 64°C for 30 seconds. All measurements were performed three times for each sample. Relative gene

expression was calculated using the $2^{-\Delta\Delta C_t}$ method [38]. Relative expression of the target gene was normalized to that of β -actin (ACTB).

Statistical analyses

Results are shown as mean with standard error bar. All data were analyzed by a *T*-test procedure using the R statistical program [33]. Statistical significances were considered at $p < 0.05$, $p < 0.01$ and $p < 0.0001$.

RESULTS

Growth performance of chickens after gluten intake experiment

We performed a gluten feeding experiment (gluten: 0% or 25%) on chicken at 1 week old and 4 weeks of age. Chicken fed a non-gluten diet showed higher feed intake and body weight gain during gluten feeding challenge both at 1 week and 4 weeks of age ($p < 0.05$) (Supplementary Tables S3 and S4).

Quality assessment of RNA-seq reads from the samples

Quality filtration of the RNA-seq data using the Trimmomatic tool left 95.35% good quality RNA-seq reads from the samples to be used for downstream analysis. Average numbers of sequence reads were 16.1, 17.4, 16.8, and 17.7 million for the non-gluten-fed 1-week-old group, 25% gluten-fed 1-week-old group, non-gluten-fed 4-week-old group, and 25% gluten-fed 4-week-old groups respectively. The rates of alignment for reads from these 4 groups mostly exceeded 94%. Reads were successfully mapped to the chicken reference genome (*Gallus gallus*-5.0) using Hisat2 [29]. The sequence read order, sequence yield, total number of reads and mapping rates for each sample are shown in Supplementary Table S1. Further evaluation and comparison of the RNA-seq data from the small intestine tissue samples was achieved through visualizations such as the density plot, correlation plot, and PCA plot (presented in the Supplementary Figs. S2 and S3).

Effect of gluten on chicken duodenal villi architecture

Photomicrograph analysis of the layers of duodenal mucosa revealed the effect of a high gluten diet on intestinal morphology in broilers (Fig. 1). In the crypt depth, gluten feeding showed no significant difference in both ages. Gluten-fed broilers had a lower villus height in the 4-week-old of age (p -value = 0.044). Collectively, the villus height to crypt depth ratio was lower in the 1-week-old, gluten fed broilers (p -value = 0.027).

Host gene expression differs between non-gluten and gluten fed chickens

We identified 3,041 DEGs at 1 week and 15 DEGs at 4th week by the criterion ($|\log_2FC| > = 1$). However, we identified 289 DEGs at 1 week, but only one DEG week 4 by the criterion ($|\log_2FC| > = 2$). The number of DEGs between the gluten-fed and control groups of 1-week-old broilers was 289 (91 upregulated, 198 downregulated) ($|\log_2FC| > = 2$) (Supplementary Table S5). At 4 weeks of age, the number of DEGs in the gluten-fed group relative to the controls was one (downregulated) and this gene was not shown in DEGs of 1 week old group. Expression levels of significant DEGs in 1-week-old and 4-week-old chicken groups are shown in Fig. 2. Of the 289 DEGs found between the gluten-fed and control groups of 1-week-old chickens, FABP6 gene had the highest base mean read count and the most significant (Supplementary Table S5). This gene encodes one of the small ubiquitous cytoplasmic proteins, FABP6, that can bind hydrophobic ligands including long-chain fatty acids. This gene is involved in the uptake, transport

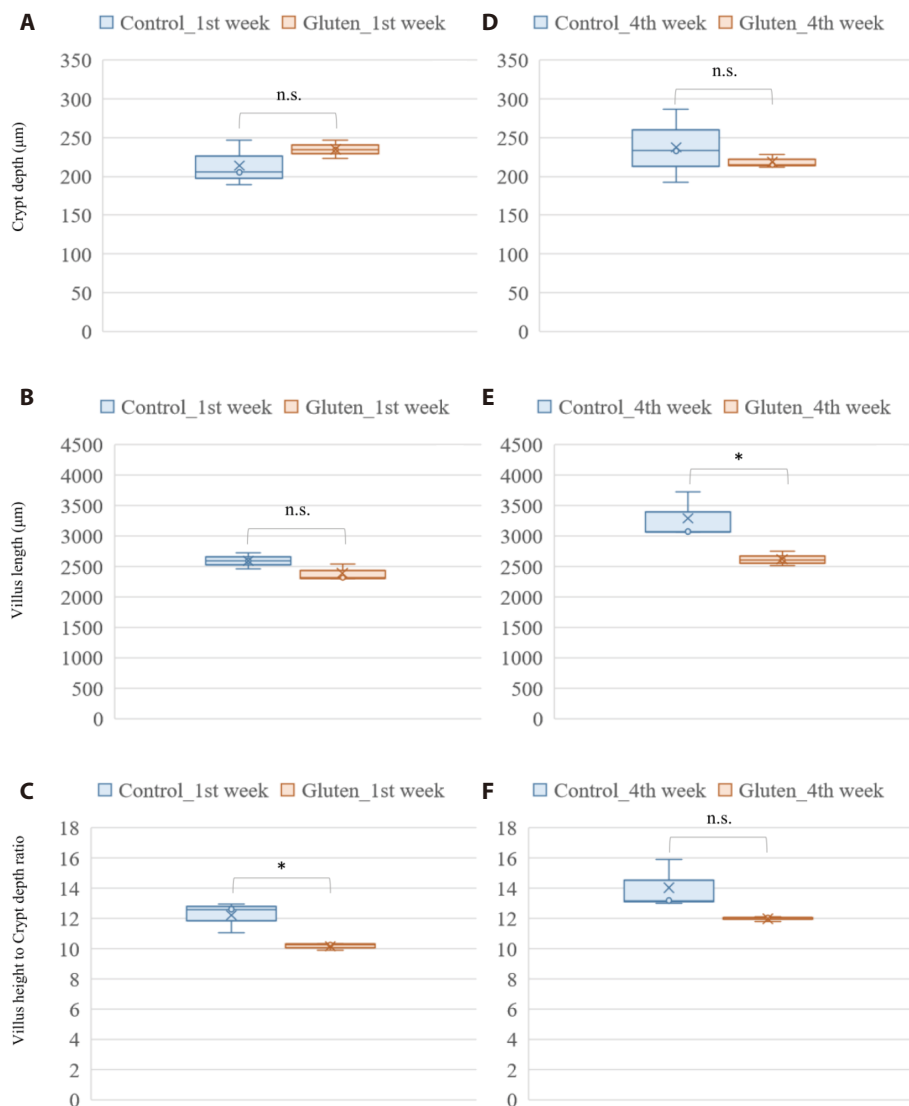


Fig. 1. Effect of a high gluten diet on intestinal morphology within the duodenum of chicken at 1 week (A, B, C) and 4 weeks of age (D, E, F). (A) Crypt depth (μm) of control and gluten-fed groups of chicken at 1 week. (B) Villus height (μm) of control and gluten-fed groups of chicken at 1 week. (C) Villus height to crypt depth ratio of control and gluten-fed groups of chicken at 1 week. (D) Crypt depth of control and gluten-fed groups of chicken at 4 weeks of age. (E) Villus height of control and gluten-fed groups of chicken at 4 weeks of age. (F) Villus height to crypt depth ratio of control and gluten-fed groups of chicken at 4 weeks of age. * $p < 0.05$. n.s., not significant.

and metabolism of fatty acids as well as in the peroxisome proliferator-activated receptor (PPAR) signaling pathway.

We identified the top 10 biological pathways related to DEGs between the two groups (25% gluten-fed and control groups) at 1 week of age based on the KEGG pathway analysis. Among the enriched pathways, Ribosome, Oxidative phosphorylation, PPAR signaling pathways showed statistically significant enrichment among the treatment group (Table 1). In gene ontology analysis, we used three functional databases; biological process, cellular component and molecular function. We obtained 10 biological processes, 10 cellular component terms and 11 molecular functions among the gene ontologies of the DEGs in gluten fed and control chicks at 1 week of age (Table 2). In biological process gene ontology analysis, identified DEGs were most relevant to substrate

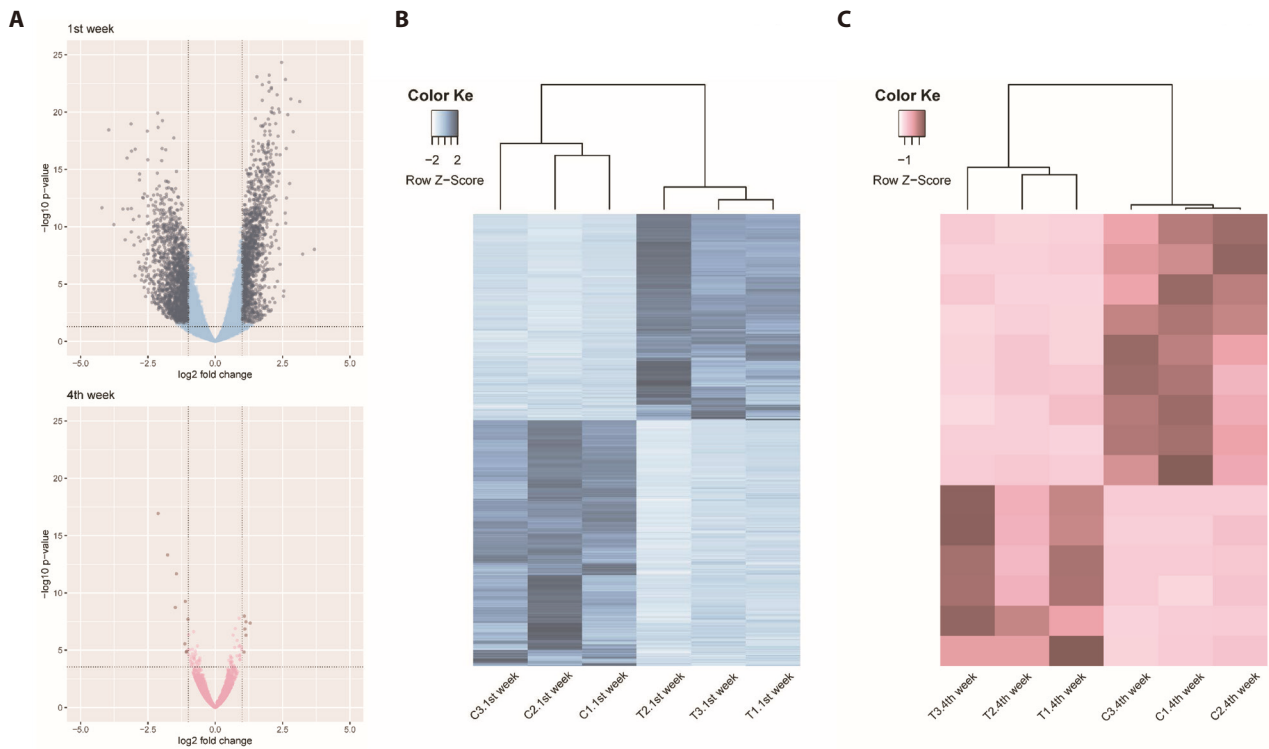


Fig. 2. A comparison of the gene expression pattern between the control (non-gluten-fed) and gluten-fed (25%-gluten-fed) group at 1 week of age. (A) A volcano plot of 1 week old (A, upper) and 4 weeks old (B, lower) chicken groups. We extracted DEGs that showed $|\log_2(\text{fold change})| > 1$ and FDR (adjusted p -value) < 0.05 . Each dot line in x-axis (\log_2 fold change) and y-axis (adjusted P -value) indicated significant level in this analysis. (B) A heatmap of 3,041 DEGs (1,389 upregulated, 1,652 downregulated) comparing gene expression between gluten-fed and control groups at 1 week of age. C1.1st week, C2.1st week and C3.1st week were in the control group, and T1. 1st week, T2. 1st week and T3. 1st week belonged to the gluten-fed group. The color scale represents a downregulation at the white end and an upregulation towards the blue end. (C) A heatmap of 15 DEGs (6 upregulated, 9 downregulated) comparing gene expression between gluten-fed and control groups at 4 week of age. C1.4th week, C2. 4th week and C3. 4th week were in the control group, and T1.1. 4th week, T1.2. 4th week and T1.3. 4th week belonged to the gluten-fed group. The color scale represents a downregulation at the white end and an upregulation towards the pink end. FDR, false discovery rate; DEGs, differentially expressed genes.

Table 1. KEGG pathway analysis of differentially expressed genes (top 10 pathways) in the small intestines of the gluten-fed (25% gluten) and control (0% gluten) groups of the broilers at 1 week of age

Pathway ID	Description	#Genes	Enrichment	p-value	Gene name
gga03010	Ribosome*	16	7.74	< 0.0001	RPL22L1, RPL36, RPLP1, RPS15, RPS21, MRPL32, MRPS10, RPS7, MRPL35, RPS24, RPL35A, RPL37, RPS28, RPL27A, RPL29, RPL38
gga00190	Oxidative phosphorylation*	7	3.53	0.003	NDUFB7, ATP5J, NDUFV3, ATP5H, NDUFB1, COX17, UQCRI0
gga03320	PPAR signaling pathway*	4	3.93	0.018	SCD, LPL, FABP6, FABP2
gga00310	Lysine degradation	3	3.40	0.057	KMT2A, ASH1L, KMT2D
gga04933	AGE-RAGE signaling pathway in diabetic complications	4	2.65	0.063	FN1, COL4A2, NFATC1, PLCE1
gga04010	MAPK signaling pathway	7	1.84	0.085	CACNA1B, ELK4, NFATC1, CACNA2D2, CACNA1G, PDGFRB, PTPRR
gga04260	Cardiac muscle contraction	3	2.85	0.087	ACTC1, CACNA2D2, UQCRI0
gga04810	Regulation of actin cytoskeleton	6	1.89	0.096	ITGA1, FN1, SSH2, WASF1, ARHGEF4, PDGFRB
gga00260	Glycine, serine and threonine metabolism	2	3.19	0.129	GCSH, PHGDH
gga04514	Cell adhesion molecules (CAMs)	4	2.05	0.13	SDC3, NFASC, NLGN3, SIGLEC1

KEGG, Kyoto Encyclopedia of Genes and Genomes; PPAR, peroxisome proliferator-activated receptor; AGE, advanced glycation end products; RAGE, receptor for advanced glycation endproducts; MAPK, mitogen-activated protein kinase.

Table 2. Gene Ontology (GO) analysis of differentially expressed genes (Biological process, Cellular component, Molecular function)

GO ID	Description	#Genes	Enrichment	p-value	Gene name
Gene Ontology biological process					
GO:0034446	Substrate adhesion-dependent cell spreading	3	14.89	9.6.E-04	PEAK1, SDC3, NET1
GO:0042255	Ribosome assembly	3	14.89	9.6.E-04	RPS15, MDN1, RPS28
GO:0002181	Cytoplasmic translation	3	14.11	1.1.E-03	RPL36, RPLP1, RPL29
GO:0032989	Cellular component morphogenesis	9	2.98	2.7.E-03	PEAK1, KIF26B, SLIT3, SDC3, NET1, EP300, CAP2, WASF1, ACTC1
GO:0042274	Ribosomal small subunit biogenesis	3	10.31	2.9.E-03	RPS15, RPS21, RPS28
GO:0010742	Macrophage derived foam cell differentiation	2	22.34	3.3.E-03	LPL, EP300
GO:0090077	Foam cell differentiation	2	22.34	3.3.E-03	LPL, EP300
GO:1900026	Positive regulation of substrate adhesion-dependent cell spreading	2	22.34	3.3.E-03	SDC3, NET1
GO:0006412	Translation	7	3.49	3.5.E-03	RPL36, RPLP1, RPS15, RPS21, RPL37, RPS28, RPL29
GO:0043043	Peptide biosynthetic process	7	3.40	4.0.E-03	RPL36, RPLP1, RPS15, RPS21, RPL37, RPS28, RPL29
Gene Ontology cellular component					
GO:0022626	Cytosolic ribosome	7	15.41	2.36.E-07	RPL36, RPLP1, RPS15, RPS21, RPL37, RPS28, RPL29
GO:0044391	Ribosomal subunit	7	10.27	3.97.E-06	RPL36, RPLP1, RPS15, RPS21, RPL37, RPS28, RPL29
GO:0005840	Ribosome	7	8.80	1.12.E-05	RPL36, RPLP1, RPS15, RPS21, RPL37, RPS28, RPL29
GO:0044445	Cytosolic part	7	8.31	1.65.E-05	RPL36, RPLP1, RPS15, RPS21, RPL37, RPS28, RPL29
GO:0022625	Cytosolic large ribosomal subunit	4	15.09	1.22.E-04	RPL36, RPLP1, RPL37, RPL29
GO:0022627	Cytosolic small ribosomal subunit	3	15.85	8.10.E-04	RPS15, RPS21, RPS28
GO:0015934	Large ribosomal subunit	4	9.19	8.60.E-04	RPL36, RPLP1, RPL37, RPL29
GO:0030529	Intracellular ribonucleoprotein complex	8	3.76	1.07.E-03	RPL36, RPLP1, RPS15, RPS21, MDN1, RPL37, RPS28, RPL29
GO:1990904	Ribonucleoprotein complex	8	3.76	1.07.E-03	RPL36, RPLP1, RPS15, RPS21, MDN1, RPL37, RPS28, RPL29
GO:0015935	Small ribosomal subunit	3	12.19	1.77.E-03	RPS15, RPS21, RPS28
Gene Ontology molecular function					
GO:0003735	Structural constituent of ribosome	7	10.23	3.94.E-06	RPL36, RPLP1, RPS15, RPS21, RPL37, RPS28, RPL29
GO:0005198	Structural molecule activity	8	3.82	9.38.E-04	RPL36, RPLP1, RPS15, COL4A2, RPS21, RPL37, RPS28, RPL29
GO:0017048	Rho gtpase binding	2	16.08	6.49.E-03	NET1, WASF1
GO:0005507	Copper ion binding	2	14.85	7.62.E-03	LOX, COX17
GO:0005509	Calcium ion binding	6	2.87	1.69.E-02	SLIT3, LRP1, CALB1, CDHR1, DCHS1, SMOC1
GO:0019843	Rna binding	2	9.65	1.77.E-02	RPLP1, RPL37
GO:0019842	Vitamin binding	2	7.72	2.71.E-02	CALB1, RBP2
GO:0046872	Metal ion binding	15	1.59	3.70.E-02	SLIT3, BCO1, LRP1, LOX, CALB1, CDHR1, EP300, DCHS1, HELZ2, MAST3, ELM-SAN1, RPL37, MAT2A, SMOC1, COX17
GO:0008092	Cytoskeletal protein binding	6	2.37	3.84.E-02	KIF26B, TNS1, MAST3, CAP2, WASF1, ACTC1
GO:0008188	Neuropeptide receptor activity	2	6.23	4.04.E-02	NPFFR1, SSTR2

adhesion-dependent cell spreading and ribosome assembly. Additionally, 9, 7, 7 were strongly associated with cellular component morphogenesis, translation, and peptide biosynthetic process, respectively. In cellular component gene ontology analysis, 7 genes were commonly relevant to cytosolic ribosome, ribosomal subunit, ribosome, and cytosolic part. These 7 genes plus another gene, MDN1 were associated with intracellular ribonucleoprotein complex and ribonucleoprotein complex. In molecular function part of DEGs gene ontology analysis, structural constituent of ribosome and structural molecule activity were the most significant and metal ion binding was relevant to numerous DEGs (15 genes).

Also, we selected 2 DEGs (FABP6, SCD) associated with results of KEGG pathway analysis and randomly extracted 2 DEGs (PRDX1 and IRAK1BP1) to compare qRT-PCR validation with RNA-seq results. A high correlation was found between results from RNA-seq data and the levels of expression detected using the PCR (Fig. 3).

Unlike comparison at 1 week age, we adopted the criterion ($|\log_2FC| \geq 1$) to compare the DEGs between two growth stages by gluten feeding in 4-week-age chicken data analysis. The number of DEGs between the gluten-fed and control groups of 4-week-old broilers was 15 (6 upregulated, 9 downregulated) (Supplementary Table S6). We identified 10 gene functions out of 15 DEGs in 4-week age chickens comparison (between control and gluten-fed)

DISCUSSION

In this study the effect of a high gluten diet on small intestines of broiler chicks was investigated. We evaluated the response of chicken duodenum both histologically and in gene expression using

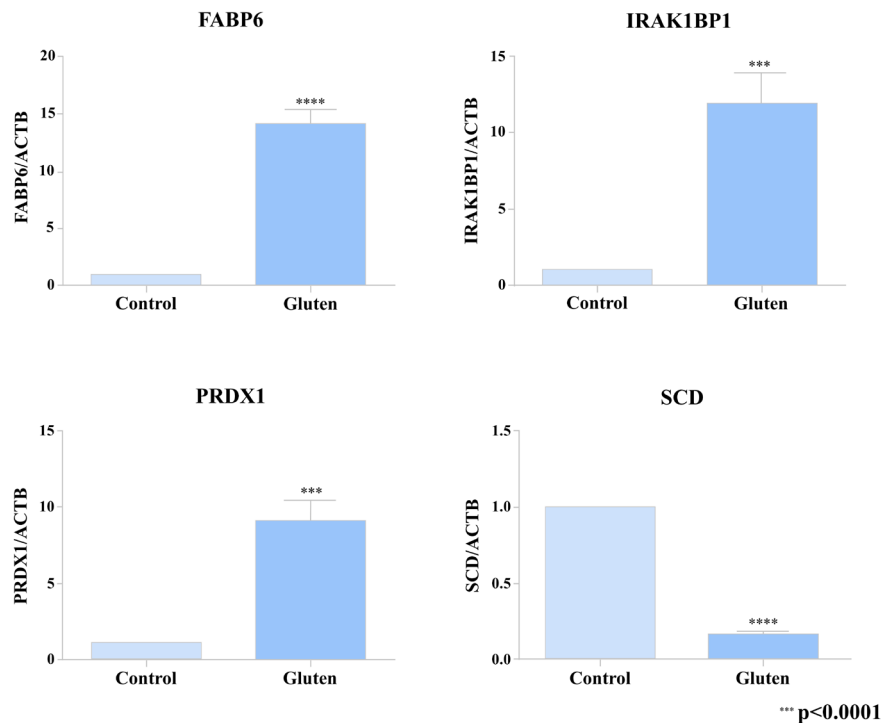


Fig. 3. A comparison of gluten-associated differential expression of selected genes using quantitative real-time polymerase chain reaction (qRT-PCR). 0% refers to the control group of 1-week-old chicken (fed 0% gluten) and 25% refers to the 1-week-old treatment group (fed 25% gluten).

transcriptomic techniques. We hypothesized that feeding chicken a high gluten diet would result in damage to the physiology and immune function of the small intestines with consequent retardation in intestinal development. This is the first report that we know of describing the gene expression pattern associated with high gluten diet in broilers. We identified a total of 289 DEGs between broiler chicks fed a high gluten diet (25% gluten) and those fed a control diet (0% gluten) at 1 week of age and only one DEG when comparing the groups at 4 weeks of age. In addition, PCA plots of the read count data from the host gene expression, clearly distinguished between high-gluten-fed and control groups of at 1 week of age. However, the PCA plot did not distinguish between the high-gluten-fed and control groups at 4 weeks of age (Supplementary Fig. S3). This was surprising because our results had revealed damage to the duodenal mucosa in villus height as well as a reduction in feed intake and weight gain among the gluten-fed groups at all ages within the study. We speculate that damage may not be significant to detect the DEGs in aspect of the collective indicator of villus height to crypt depth ratio between control and gluten-fed broilers at 4 weeks of age.

The effect of a high-gluten containing diet on growth performance of the broilers in our study was consistent with findings from previous studies on not only diets rich in wheat gluten [20] but also diets rich in corn gluten [39]. In the current study, we found a significant decrease in feed intake and average daily gain among broilers fed a diet with high inclusion levels of wheat gluten. In their study, Afshar and Moslehi [20] argued that consumption of feed with high proportions of gluten raised the viscosity of intestinal content due to the water absorbing property of gluten. And that it was this high viscosity that led to a reduction in feed intake with a subsequent impact on weight gain [20]. Also, previous study about clinical improvement in response to a gluten-free diet in human celiac disease patient performed intestinal biopsy to examine characteristic histopathologic changes of the duodenum. Celiac disease is a serious autoimmune disease that occurs in genetically predisposed people where the ingestion of gluten leads to damage in the small intestine. This previous study could find abnormal endoscopic and histopathologic appearances in the majority of patients with celiac disease (pubmed.ncbi.nlm.nih.gov/12556782/). Histologically, the gluten rich diet induced a significant reduction in villus height within the duodenum of chicken in the treatment group at 4 weeks of age in this study. This was in agreement with previous studies that found wheat gluten induced reduction in villus height [28,40]. Further analysis of the photomicrograph also revealed a reduction in the ratio of villus height to crypt depth among the gluten-fed broilers, especially at 1 week of age. A reduced villus height to crypt depth ratio is associated with reduction in absorptive potential of the small intestine [41,42]. In regard to these gluten-induced effect on villi architecture, the observed reduction in body weight gain among the gluten-fed broilers relative to the controls is not a surprise (Supplementary Tables S3 and S4).

There is a possibility that the revealed changes in gene expression at 1 week were involved in the manifestation of histological changes within the duodenal mucosa and subsequent drop in feed intake and body weight gain of the gluten fed birds. We therefore examined the DEGs by performing KEGG pathway and gene ontology analyses in order to get insights into their role in the observed effects of a high gluten diet. A notable finding from this study was, that the expression of genes involved in the ribosome pathway were significantly up regulated in the duodenal mucosa of chicken fed a high gluten diet. Sixteen (16) DEGs were associated with ribosome protein biogenesis and ribosome assembly. Thirteen of these DEGs, (RP S7, RPS28, RPS24, RPS21, RPS15, RPLP1, RPL38, RPL37, RPL36, RPL35A, RPL29, RPL27A and RPL22L1) coded for cytosol ribosomal protein, and three genes (MRPS10, MRPL35 and MRPL32) coded for mitochondrial ribosomal protein. These proteins play an important part in the assembly of the ribosomal structure and enabling the translational role of the ribosome. However, the up regulation of these genes would lead to the increased expression of 16 out of approximately 79 ribosomal

protein in chicken cells [43]. It is known that a dysregulation of ribosomal proteins is a feature of ribosomal stress [43,44]. Among the triggers of ribosomal stress are; physical, chemical and irradiation agents that perturb ribosomal protein biogenesis as well as lack of nutrients [43]. The elastic gluten proteins have been shown to increase digesta viscosity within the chicken gut which in turn affects gut movement, and nutrient absorption [45]. It is therefore plausible that these physical characteristics of gluten in the gut might trigger a ribosomal stress. The observed effect on the villi-crypt arrangement in this study could also account for an interruption of nutrient absorption. An unbalanced increment in the ribosomal proteins induces their regulation through the activation of p53 in the MDM2/MDMX-p53 cascade [46] which in turn results in arrest of the cell cycle and consequently, cell proliferation. Indeed, some of the upregulated ribosomal proteins; RPL37, RPS7 and RPS15 are known to bind to MDM2/X thus preventing its degradation of p53 [47,48]. We speculate that it is this ribosomal protein induced accumulation of p53 that causes the retardation of villi development observed histologically among the gluten fed birds.

Another significantly upregulated pathway was the PPAR signaling path. This pathway includes a collection of receptor proteins found in the nucleus which, as transcription factors, regulate expression of certain genes. Their functioning is critical to cellular differentiation, development, and lipid metabolism [49]. Four genes within this pathway were differentially expressed; FABP2, FABP6, LPL and SCD (Table 1 and Fig. 4). Of these, FABP2 and FABP6 were upregulated while LPL and SCD genes were downregulated in the duodenal samples from high-gluten-fed broilers. The FABP6 gene codes for the Fatty acid Binding Protein 6 (also known as the ileal FABP/ II-FABP). The protein plays a role in the uptake and transport of bile salts into the enterocytes [50]. Therefore, the upregulation of this gene would result in the increased production of the FABP6 protein leading to increased uptake of bile salts into the enterocytes. Accumulation of bile salts into

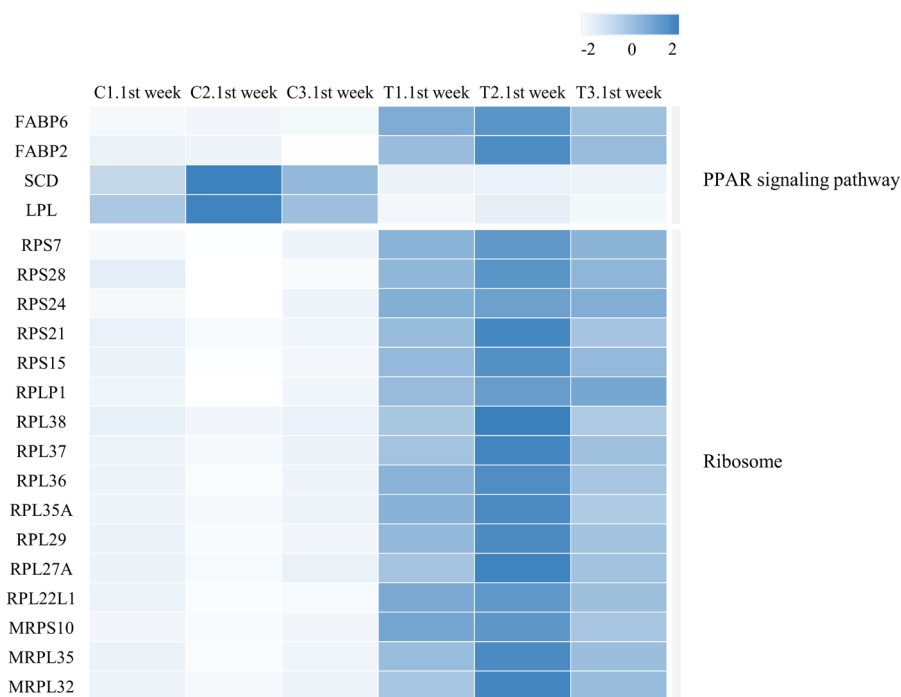


Fig. 4. A heatmap comparing gluten-fed and non-gluten fed 1-week-old chicken using 4 genes related to PPAR signaling pathway and 16 genes related to ribosome pathway. The heatmap was generated through WebGestalt analysis. The color scale goes from white (downregulation) to blue (upregulation). PPAR, peroxisome proliferator-activated receptor.

the enterocytes has been shown to induce apoptosis and/ arrest of cell growth [51]. It is therefore plausible that upregulation of this gene caused the observed retardation of villi development in the duodenum of chicken fed a high gluten diet. FABP2 codes for the intestinal FABP protein (also known as FABP2/ I-FABP). This binding protein is involved in the uptake and transport of the fatty acids [52]. The FABP2 protein carries the fatty acid towards the triacylglycerol pathway leading to accumulation of triacylglycerols and cholesteryl [53] which are then secreted into circulation via the intestinal lymphatic system. The SCD gene codes for Stearoyl-coenzyme A desaturase (SCD1) which mediates the synthesis of mono-unsaturated fatty acids (MUFAs). One of these MUFAs, Oleic acid, is a building block for the complex lipids that support cell proliferation [54]. In addition, oleic acid is an endogenous ligand of the PPAR- γ which is an important transcription factor in anti-inflammatory signaling [55]. Therefore, the down regulation of the SCD gene by the high gluten diet would lead to the suppression of the anti-inflammatory activity of PPAR- γ . Indeed, it has been reported that SCD ablation in mice promotes inflammation [56]. This is also in agreement with findings from our previous study where we reported a chronic inflammation in the duodenal mucosa of 25% and 50% gluten fed broilers [28]. In the study, the histological signature of chronic inflammation was supported by an upregulation of inflammatory mediators (tumor necrosis factor [TNF]- α , interleukin [IL]-12, IL-8 and IL-6) [28]. This implies that a gluten-induced downregulation of SCD in the current study resulted in a shift of balance in the modulation of inflammation with a resultant enabling of a chronic inflammatory process in the chicken duodenum. In addition, SCD promotes cholesterol and phospholipid production and consequently, promotes membrane lipid production [57]. Downregulation of this gene would therefore reduce membrane formation and eventually suppress cell proliferation. The LPL gene codes for the lipoprotein lipase (LPL) enzyme. The enzyme is produced in several tissues including the duodenum but has its physiological role in the luminal surface of endothelial cells of capillaries. LPL catalyzes the hydrolysis of plasma triacyl glycerides TAG's into free fatty acids and monoacylglycerols for tissue utilization (reviewed by Alpers et al. [58]). Therefore, a downregulation of this gene in the duodenum, would theoretically results in reduction of LPL activity in the duodenum and as a result a reduced uptake of fatty acids from plasma into the duodenal tissues. However, LPL is produced in multiple sites and its regulation can be tissue specific (reviewed by Braun and Severson [59]). This therefore may not mean a systemic reduction in plasma triglyceride rich lipoproteins or a consequential systemic increase in fat storage/deposition in the broilers. In contrast, the LPL gene is upregulated in gluten-induced enteropathy among celiac patients [60] but was downregulated in our gluten-fed broilers. Further, the PPAR signaling pathway is downregulated in human celiac patients [61,62] and a gluten-free diet alleviates signs, at least in part, by upregulation of the pathway [62]. Considering our findings in the PPAR signaling pathway modulation, it could be inferred that a high gluten diet promoted the transport of triacylglycerols (storage form of lipids) across the enterocytes while lowering fatty acid uptake from circulation and therefore utilization in the duodenal tissues. This would further explain the retarded development of duodenal villi observed in the broilers fed a high gluten diet in our study since fatty acids are crucial to cell proliferation as structural and functional components.

The third pathway that was significantly differentially expressed was the oxidative phosphorylation pathway. Seven genes in this pathway (NDUFB1, NDUFB7, NDUFV3, UQCRC10, COX17, ATP5J and ATP5H) were upregulated in the duodenum of broilers fed a high gluten diet. These genes code for subunits of the complexes I, III, IV and V of the mitochondrial electron transport chain (ETC). Three of these genes, NDUFB1, NDUFB7 and NDUFV3, code for accessory subunits of the mitochondrial complex I (NADH: ubiquinone oxidoreductase). Very little is currently known about the particular roles played by these accessory subunits. However, the

NDUFB1 subunit is one of the single transmembrane domains (STMD) thought to stabilize and therefore promote the assembly of the transmembrane helices of the hydrophobic core subunits of complex I within the mitochondrial membrane [63]. The NDUFB7 subunit is critical to the proton pumping function of the mitochondrial complex I. Without it, the entire distal proton pumping module (PD module) is disabled and about half of the proton pumping function of complex I is lost [64]. Both NDUFB1 and NDUFB7 are components of the PD module of complex I. Enhanced proton pumping across the inner mitochondrial membrane leads to generation of a proton motive force which has been implicated in the increased production of reactive oxygen species by complex I [65]. On the other hand, the NDUFV3 subunit is a structural component of the electron input module (N module). UQCR10 codes for a subunit of complex III (Coenzyme Q-cytochrome c oxidoreductase) that plays a role in the assembly of complex III of the ETC [66] and therefore contributes to the reduction of cytochrome c. COX17, codes for the Cytochrome c oxidase copper chaperone protein which is a subunit of complex IV (Cytochrome c oxidase). This protein plays a vital role in the assembly of as well as recruitment and presentation of copper to the mitochondrial cytochrome c oxidase [67]. Two of the upregulated genes (ATP5J and ATP5H) in this pathway code for subunits of complex V (F₀F₁ ATP synthase) of the ETC. ATP5J codes for the ATP synthase, H⁺ transporting mitochondrial F₀ complex subunit F₆ that is responsible for connecting the lipid-soluble inner membrane-bound F₀ region to the water soluble, matrix-exposed F₁ region of the complex [68]. ATP5H codes for the ATP synthase, H⁺ transporting mitochondrial F₀ complex subunit D whose putative role is in the assembly of ATP synthase [69]. Overall, increased oxidative phosphorylation is a feature of non-proliferating or quiescent cells, given that cell proliferation is skewed more towards aerobic glycolysis than oxidative phosphorylation (as reviewed by Vander Heiden et al. [70]) However, it remains unclear whether these subunits work in-sync with the other subunits of the mitochondrial complexes they belong to or whether they could function independently within the cytoplasm and/or mitochondrial matrix. And in the latter case, which of their roles would be influenced greatest by their dysregulation. In 15 DEGs from 4-week age chickens comparison (between control and gluten-fed), we could find gene function of 10 genes (Supplementary Table S6). Among them, we confirmed two down-regulated genes (MGAM, MLXIPL) related to carbohydrate metabolism and one up-regulated gene (PDK4) in lipolysis due to an increase in gluten intake. In addition, we were able to confirm the decrease in the expression of one immune protein gene (DMB1) and observed two genes (DFNA5, IFI6) related to apoptosis in two small intestine tissues. Also, we confirmed the increase in the expression of one intestinal inflammation gene (SAMD9L), and interestingly, observed that the CDCP2 motif-related gene (CDCP2; CUB domain containing protein 2) showed a difference in expression. The CUB3 domain is a widely occurring structural motif, and this protein is involved in many biological functions (including tissue repair, cell signaling). The decreased gene expression of CDCP2 motif proteins in the gluten-fed group suggested that gluten could induce widespread biological function decline.

Additionally, we thought that transcriptomic comparisons and following DEG analyses between 1 week and 4 weeks per normal (1 week vs 4 weeks in normal) and treatment (1 week vs 4 weeks in treat), respectively can identify transcriptomic changes between ages in two different aspects. We could identify 354 DEGs between 1 week and 4 weeks in control and 3,591 DEGs between 1 week and 4 weeks in gluten treatment (Supplementary Figs. S4–S7). Based on this result, we found that gluten supplementation induces many transcriptional changes.

In conclusion, this study presents the transcriptomic profile of the duodenum in broilers fed a high gluten containing diet. Our findings suggest that a high gluten diet induces an upregulation of genes involved in ribosome biogenesis, PPAR signaling and oxidative phosphorylation in 1-week-

old broilers. Deductions from this pattern indicate that high gluten in the diet causes chronic inflammation and transcriptional inhibition of cell proliferation within the duodenal mucosa. However, the gluten-induced transcriptional changes were more pronounced early in the life of the broilers (1 week of age) but not at a later age (4 weeks of age). It is unclear why we were unable to detect significant transcriptional changes at 4 weeks of age despite the histological change of the villus height observed. However, it is plausible that a reduced transcriptional response might be, in part, a coping mechanism that boosts the birds' resilience towards the nutritional stress due to a high gluten diet [71]. This study was limited by a small RNA-seq sample size [72] and the inherent difficulty of interpreting transcriptome analysis involving multiple cell type (in this case, the various cell types within the duodenum). However, in the right context, our findings show that our approach could simultaneously characterize the diversity of the differential expression of several genes from the host in response to gluten-feed. It has a direct and broad applicability in nutrigenomic and veterinary studies. Despite the insights from this study, many questions remain. More needs to be understood about the roles played by these DEGs so that more reliable/conclusive deductions can be made about such observed patterns in transcriptional responses.

SUPPLEMENTARY MATERIALS

Supplementary materials are only available online from: <https://doi.org/10.5187/jast.2022.e42>.

REFERENCES

1. FAO [Food and Agriculture Organization of the United Nations]. FAOSTAT statistical database [Internet]. 2020 [cited 2021 November 27]. <https://www.fao.org/faostat/en/#home>
2. Svihus B, Kløvstad KH, Perez V, Zimonja O, Sahlström S, Schüller RB, et al. Physical and nutritional effects of pelleting of broiler chicken diets made from wheat ground to different coarsenesses by the use of roller mill and hammer mill. *Anim Feed Sci Technol*. 2004;117:281-93. <https://doi.org/10.1016/j.anifeedsci.2004.08.009>
3. Monaghan JM, Snape JW, Chojecki AJS, Kettlewell PS. The use of grain protein deviation for identifying wheat cultivars with high grain protein concentration and yield. *Euphytica*. 2001;122:309-17. <https://doi.org/10.1023/A:1012961703208>
4. Kindred DR, Verhoeven TMO, Weightman RM, Swanston JS, Agu RC, Brosnan JM, et al. Effects of variety and fertiliser nitrogen on alcohol yield, grain yield, starch and protein content, and protein composition of winter wheat. *J Cereal Sci*. 2008;48:46-57. <https://doi.org/10.1016/j.jcs.2007.07.010>
5. Shewry PR, Tatham AS, Barro F, Barcelo P, Lazzeri P. Biotechnology of breadmaking: unraveling and manipulating the multi-protein gluten complex. *Bio/Technology*. 1995;13:1185-90. <https://doi.org/10.1038/nbt1195-1185>
6. Dupont FM, Altenbach SB. Molecular and biochemical impacts of environmental factors on wheat grain development and protein synthesis. *J Cereal Sci*. 2003;38:133-46. [https://doi.org/10.1016/S0733-5210\(03\)00030-4](https://doi.org/10.1016/S0733-5210(03)00030-4)
7. Wieser H. Chemistry of gluten proteins. *Food Microbiol*. 2007;24:115-9. <https://doi.org/10.1016/j.fm.2006.07.004>
8. Biesiekierski JR. What is gluten? *J Gastroenterol Hepatol*. 2017;32:78-81. <https://doi.org/10.1111/jgh.13703>
9. Ferguson A, McClure JP, MacDonald TT, Holden RJ. Cell-mediated immunity to gliadin within the small-intestinal mucosa in coeliac disease. *Lancet*. 1975;305:895-7. [https://doi.org/10.1016/S0140-6736\(75\)90000-0](https://doi.org/10.1016/S0140-6736(75)90000-0)

- org/10.1016/S0140-6736(75)91689-X
10. Czaja-Bulsa G. Non coeliac gluten sensitivity: A new disease with gluten intolerance. *Clin Nutr.* 2015;34:189-94. <https://doi.org/10.1016/j.clnu.2014.08.012>
 11. Hausch F, Shan L, Santiago NA, Gray GM, Khosla C. Intestinal digestive resistance of immunodominant gliadin peptides. *Am J Physiol Gastrointest Liver Physiol.* 2002;283:G996-1003. <https://doi.org/10.1152/ajpgi.00136.2002>
 12. Thomas KE, Sapone A, Fasano A, Vogel SN. Gliadin stimulation of murine macrophage inflammatory gene expression and intestinal permeability are MyD88-dependent: role of the innate immune response in Celiac disease. *J Immunol.* 2006;176:2512-21. <https://doi.org/10.4049/jimmunol.176.4.2512>
 13. Arentz-Hansen H, Mcadam SN, Molberg Ø, Fleckenstein B, Lundin KEA, Jørgensen TJD, et al. Celiac lesion T cells recognize epitopes that cluster in regions of gliadins rich in proline residues. *Gastroenterology.* 2002;123:803-9. <https://doi.org/10.1053/gast.2002.35381>
 14. Quarsten H, Molberg Ø, Fugger L, McAdam SN, Sollid LM. HLA binding and T cell recognition of a tissue transglutaminase-modified gliadin epitope. *Eur J Immunol.* 1999;29:2506-14. [https://doi.org/10.1002/\(SICI\)1521-4141\(199908\)29:08<2506::AID-IMMU2506>3.0.CO;2-9](https://doi.org/10.1002/(SICI)1521-4141(199908)29:08<2506::AID-IMMU2506>3.0.CO;2-9)
 15. Sollid LM. Coeliac disease: dissecting a complex inflammatory disorder. *Nat Rev Immunol.* 2002;2:647-55. <https://doi.org/10.1038/nri885>
 16. Bethune MT, Borda JT, Ribka E, Liu MX, Phillippi-Falkenstein K, Jandacek RJ, et al. A non-human primate model for gluten sensitivity. *PLOS ONE.* 2008;3:e1614. <https://doi.org/10.1371/journal.pone.0001614>
 17. Hall EJ, Batt RM. Dietary modulation of gluten sensitivity in a naturally occurring enteropathy of Irish setter dogs. *Gut.* 1992;33:198-205. <https://doi.org/10.1136/gut.33.2.198>
 18. van der Kolk JH, van Putten LA, Mulder CJ, Grinwis GCM, Reijm M, Butler CM, et al. Gluten-dependent antibodies in horses with inflammatory small bowel disease (ISBD). *Vet Q.* 2012;32:3-11. <https://doi.org/10.1080/01652176.2012.675636>
 19. Galipeau HJ, Rulli NE, Jury J, Huang X, Araya R, Murray JA, et al. Sensitization to gliadin induces moderate enteropathy and insulinitis in nonobese diabetic-DQ8 mice. *J Immunol.* 2011;187:4338-46. <https://doi.org/10.4049/jimmunol.1100854>
 20. Afshar M, Moslehi H. Investigation in the effect of using wheat gluten meal on broiler performance. In: World Poultry Science Association (WPSA) XII European Poultry Conference; 2006; Verona, Italy.
 21. Plavnik I, Macovsky B, Sklan D. Effect of feeding whole wheat on performance of broiler chickens. *Anim Feed Sci Technol.* 2002;96:229-36. [https://doi.org/10.1016/S0377-8401\(01\)00321-2](https://doi.org/10.1016/S0377-8401(01)00321-2)
 22. Blasco M, Fondevila M, Guada JA. Inclusion of wheat gluten as a protein source in diets for weaned pigs. *Anim Res.* 2005;54:297-306. <https://doi.org/10.1051/animres:2005026>
 23. Branton SL, Reece FN, Hagler WM Jr. Influence of a wheat diet on mortality of broiler chickens associated with necrotic enteritis. *Poult Sci.* 1987;66:1326-30. <https://doi.org/10.3382/ps.0661326>
 24. Liao RB, Yan HJ, Liu GH, Zhang S, Chang WH, Liu W, et al. Effect of gut stress induced by oxidized wheat gluten on the growth performance, gut morphology and oxidative states of broilers. *J Anim Physiol Anim Nutr.* 2018;102:e849-55. <https://doi.org/10.1111/jpn.12845>
 25. Gabriel I, Mallet S, Leconte M, Travel A, Lalles JP. Effects of whole wheat feeding on the development of the digestive tract of broiler chickens. *Anim Feed Sci Technol.* 2008;142:144-62. <https://doi.org/10.1016/j.anifeedsci.2007.06.036>

26. Pluske JR, Williams IH, Aherne FX. Maintenance of villous height and crypt depth in piglets by providing continuous nutrition after weaning. *Anim Sci.* 1996;62:131-44. <https://doi.org/10.1017/S1357729800014417>
27. Chu Y, Corey DR. RNA sequencing: platform selection, experimental design, and data interpretation. *Nucleic Acid Ther.* 2012;22:271-4. <https://doi.org/10.1089/nat.2012.0367>
28. Kang DR, Belal SA, Tian W, Park BY, Choe HS, Shim KS. Effect of dietary gluten content on small intestinal inflammatory response of broilers. *Eur Poult Sci.* 2019;83. <https://doi.org/10.1399/eps.2019.285>
29. Kim D, Langmead B, Salzberg SL. HISAT: a fast spliced aligner with low memory requirements. *Nat Methods.* 2015;12:357-60. <https://doi.org/10.1038/nmeth.3317>
30. Liao Y, Smyth GK, Shi W. featureCounts: an efficient general purpose program for assigning sequence reads to genomic features. *Bioinformatics.* 2014;30:923-30. <https://doi.org/10.1093/bioinformatics/btt656>
31. Liao Y, Smyth GK, Shi W. The Subread aligner: fast, accurate and scalable read mapping by seed-and-vote. *Nucleic Acids Res.* 2013;41:e108. <https://doi.org/10.1093/nar/gkt214>
32. Love MI, Huber W, Anders S. Moderated estimation of fold change and dispersion for RNA-seq data with DESeq2. *Genome Biol.* 2014;15:550. <https://doi.org/10.1186/s13059-014-0550-8>
33. R Core Team. R: A language and environment for statistical computing. R foundation for statistical computing, Vienna, Austria. 2020.
34. Rau A, Gallopin M, Celeux G, Jaffrézic F. Data-based filtering for replicated high-throughput transcriptome sequencing experiments. *Bioinformatics.* 2013;29:2146-52. <https://doi.org/10.1093/bioinformatics/btt350>
35. Wickham H. ggplot2: elegant graphics for data analysis. 2nd ed. Cham: Springer; 2016.
36. Gautier L, Cope L, Bolstad BM, Irizarry RA. affy—analysis of Affymetrix GeneChip data at the probe level. *Bioinformatics.* 2004;20:307-15. <https://doi.org/10.1093/bioinformatics/btg405>
37. Wang J, Duncan D, Shi Z, Zhang B. WEB-based gene set analysis toolkit (WebGestalt): update 2013. *Nucleic Acids Res.* 2013;41:W77-83. <https://doi.org/10.1093/nar/gkt439>
38. Livak KJ, Schmittgen TD. Analysis of relative gene expression data using real-time quantitative PCR and the 2- $\Delta\Delta$ CT method. *Methods.* 2001;25:402-8. <https://doi.org/10.1006/meth.2001.1262>
39. Giannenas I, Bonos E, Anestis V, Filioussis G, Papanastasiou DK, Bartzanas T, et al. Effects of protease addition and replacement of soybean meal by corn gluten meal on the growth of broilers and on the environmental performances of a broiler production system in Greece. *PLOS ONE.* 2017;12:e0169511. <https://doi.org/10.1371/journal.pone.0169511>
40. Wu YB, Ravindran V, Thomas DG, Birtles MJ, Hendriks WH. Influence of method of whole wheat inclusion and xylanase supplementation on the performance, apparent metabolisable energy, digestive tract measurements and gut morphology of broilers. *Br Poult Sci.* 2004;45:385-94. <https://doi.org/10.1080/00071660410001730888>
41. Caspary WF. Physiology and pathophysiology of intestinal absorption. *Am J Clin Nutr.* 1992;55:299S-308S. <https://doi.org/10.1093/ajcn/55.1.299s>
42. Marković R, Šefer D, Krstić M, Petrujkić B. Effect of different growth promoters on broiler performance and gut morphology. *Arch Med Vet.* 2009;41:163-9. <https://doi.org/10.4067/S0301-732X2009000200010>
43. Zhou X, Liao WJ, Liao JM, Liao P, Lu H. Ribosomal proteins: functions beyond the ribosome. *J Mol Cell Biol.* 2015;7:92-104. <https://doi.org/10.1093/jmcb/mjv014>

44. Zhang Y, Lu H. Signaling to p53: ribosomal proteins find their way. *Cancer Cell*. 2009;16:369-77. <https://doi.org/10.1016/j.ccr.2009.09.024>
45. Tellez G, Latorre JD, Kuttappan VA, Kogut MH, Wolfenden A, Hernandez-Velasco X, et al. Utilization of rye as energy source affects bacterial translocation, intestinal viscosity, microbiota composition, and bone mineralization in broiler chickens. *Front Genet*. 2014;5:339. <https://doi.org/10.3389/fgene.2014.00339>
46. Dutt S, Narla A, Lin K, Mullally A, Abayasekara N, Megerdichian C, et al. Haploinsufficiency for ribosomal protein genes causes selective activation of p53 in human erythroid progenitor cells. *Blood*. 2011;117:2567-76. <https://doi.org/10.1182/blood-2010-07-295238>
47. Daftuar L, Zhu Y, Jacq X, Prives C. Ribosomal proteins RPL37, RPS15 and RPS20 regulate the Mdm2-p53-MdmX network. *PLOS ONE*. 2013;8:e68667. <https://doi.org/10.1371/journal.pone.0068667>
48. Chen D, Zhang Z, Li M, Wang W, Li Y, Rayburn ER, et al. Ribosomal protein S7 as a novel modulator of p53-MDM2 interaction: binding to MDM2, stabilization of p53 protein, and activation of p53 function. *Oncogene*. 2007;26:5029-37. <https://doi.org/10.1038/sj.onc.1210327>
49. Michalik L, Auwerx J, Berger JP, Chatterjee VK, Glass CK, Gonzalez FJ, et al. International Union of Pharmacology. LXI. Peroxisome proliferator-activated receptors. *Pharmacol Rev*. 2006;58:726-41. <https://doi.org/10.1124/pr.58.4.5>
50. Praslickova D, Torchia EC, Sugiyama MG, Magrane EJ, Zwicker BL, Kolodzieyski L, et al. The ileal lipid binding protein is required for efficient absorption and transport of bile acids in the distal portion of the murine small intestine. *PLOS ONE*. 2012;7:e50810. <https://doi.org/10.1371/journal.pone.0050810>
51. Powell AA, LaRue JM, Batta AK, Martinez JD. Bile acid hydrophobicity is correlated with induction of apoptosis and/or growth arrest in HCT116 cells. *Biochem J*. 2001;356:481-6. <https://doi.org/10.1042/bj3560481>
52. Alpers DH, Bass NM, Engle MJ, DeSchryver-Kecsckemeti K. Intestinal fatty acid binding protein may favor differential apical fatty acid binding in the intestine. *Biochim Biophys Acta* 2000;1483:352-62. [https://doi.org/10.1016/S1388-1981\(99\)00200-0](https://doi.org/10.1016/S1388-1981(99)00200-0)
53. Prows DR, Murphy EJ, Moncecchi D, Schroeder F. Intestinal fatty acid-binding protein expression stimulates fibroblast fatty acid esterification. *Chem Phys Lipids*. 1996;84:47-56. [https://doi.org/10.1016/S0009-3084\(96\)02619-9](https://doi.org/10.1016/S0009-3084(96)02619-9)
54. Scaglia N, Igal RA. Stearoyl-CoA desaturase is involved in the control of proliferation, anchorage-independent growth, and survival in human transformed cells. *J Biol Chem*. 2005;280:25339-49. <https://doi.org/10.1074/jbc.M501159200>
55. Baker PRS, Lin Y, Schopfer FJ, Woodcock SR, Groeger AL, Batthyany C, et al. Fatty acid transduction of nitric oxide signaling: multiple nitrated unsaturated fatty acid derivatives exist in human blood and urine and serve as endogenous peroxisome proliferator-activated receptor ligands. *J Biol Chem*. 2005;280:42464-75. <https://doi.org/10.1074/jbc.M504212200>
56. Ducheix S, Peres C, Härdfeldt J, Frau C, Mocciano G, Piccinin E, et al. Deletion of stearyl-CoA desaturase-1 from the intestinal epithelium promotes inflammation and tumorigenesis, reversed by dietary oleate. *Gastroenterology*. 2018;155:1524-38.e9. <https://doi.org/10.1053/j.gastro.2018.07.032>
57. Demoulin JB, Ericsson J, Kallin A, Rorsman C, Rönstrand L, Heldin CH. Platelet-derived growth factor stimulates membrane lipid synthesis through activation of phosphatidylinositol 3-kinase and sterol regulatory element-binding proteins. *J Biol Chem*. 2004;279:35392-402. <https://doi.org/10.1074/jbc.M405924200>

58. Alpers D. Role of lipoprotein lipase in triglyceride metabolism: potential therapeutic target. *Future Lipidol*. 2008;3:385-97. <https://doi.org/10.2217/17460875.3.4.385>
59. Braun JEA, Severson DL. Regulation of the synthesis, processing and translocation of lipoprotein lipase. *Biochem J*. 1992;287:337-47. <https://doi.org/10.1042/bj2870337>
60. Bragde H, Jansson U, Fredrikson M, Grodzinsky E, Söderman J. Celiac disease biomarkers identified by transcriptome analysis of small intestinal biopsies. *Cell Mol Life Sci*. 2018;75:4385-401. <https://doi.org/10.1007/s00018-018-2898-5>
61. Simula MP, Cannizzaro R, Canzonieri V, Pavan A, Maiero S, Toffoli G, et al. PPAR signaling pathway and cancer-related proteins are involved in celiac disease-associated tissue damage. *Mol Med*. 2010;16:199-209. <https://doi.org/10.2119/molmed.2009.00173>
62. Soares FLP, de Oliveira Matoso R, Teixeira LG, Menezes Z, Pereira SS, Alves AC, et al. Gluten-free diet reduces adiposity, inflammation and insulin resistance associated with the induction of PPAR-alpha and PPAR-gamma expression. *J Nutr Biochem*. 2013;24:1105-11. <https://doi.org/10.1016/j.jnutbio.2012.08.009>
63. Zickermann V, Angerer H, Ding MG, Nübel E, Brandt U. Small single transmembrane domain (STMD) proteins organize the hydrophobic subunits of large membrane protein complexes. *FEBS Lett*. 2010;584:2516-25. <https://doi.org/10.1016/j.febslet.2010.04.021>
64. Dröse S, Krack S, Sokolova L, Zwicker K, Barth HD, Morgner N, et al. Functional dissection of the proton pumping modules of mitochondrial complex I. *PLOS Biol*. 2011;9:e1001128. <https://doi.org/10.1371/journal.pbio.1001128>
65. Lambert AJ, Brand MD. Inhibitors of the quinone-binding site allow rapid superoxide production from mitochondrial NADH:ubiquinone oxidoreductase (complex I). *J Biol Chem*. 2004;279:39414-20. <https://doi.org/10.1074/jbc.M406576200>
66. Akashi H, Han HJ, Iizaka M, Nakajima Y, Furukawa Y, Sugano S, et al. Isolation and characterization of a human cDNA encoding a protein homologous to the 7.2-kDa protein (subunit X) of bovine ubiquinol-cytochrome C reductase. *J Hum Genet*. 2000;45:43-6. <https://doi.org/10.1007/s100380050008>
67. Glerum DM, Shtanko A, Tzagoloff A. Characterization of COX17, a yeast gene involved in copper metabolism and assembly of cytochrome oxidase. *J Biol Chem*. 1996;271:14504-9. <https://doi.org/10.1074/jbc.271.24.14504>
68. Collinson IR, van Raaij MJ, Runswick MJ, Fearnley IM, Skehel JM, Orriss GL, et al. ATP synthase from bovine heart mitochondria: in vitro assembly of a stalk complex in the presence of F1-ATPase and in its absence. *J Mol Biol*. 1994;242:408-21. [https://doi.org/10.1016/S0022-2836\(84\)71591-9](https://doi.org/10.1016/S0022-2836(84)71591-9)
69. Fujikawa M, Sugawara K, Tanabe T, Yoshida M. Assembly of human mitochondrial ATP synthase through two separate intermediates, F1-c-ring and b-e-g complex. *FEBS Lett*. 2015;589:2707-12. <https://doi.org/10.1016/j.febslet.2015.08.006>
70. Vander Heiden MG, Cantley LC, Thompson CB. Understanding the Warburg effect: the metabolic requirements of cell proliferation. *Science*. 2009;324:1029-33. <https://doi.org/10.1126/science.1160809>
71. Drummond H, Ancona S. Observational field studies reveal wild birds responding to early-life stresses with resilience, plasticity, and intergenerational effects. *Ornithology*. 2015;132:563-76. <https://doi.org/10.1642/AUK-14-244.1>
72. Morenikeji OB, Ajayi OO, Peters SO, Mujibi FD, De Donato M, Thomas BN, Imumorin IG. RNA-seq profiling of skin in temperate and tropical cattle. *J Anim Sci Technol*. 2020;62:141-158. <https://doi.org/10.5187/jast.2020.62.2.141>