

Figure S1

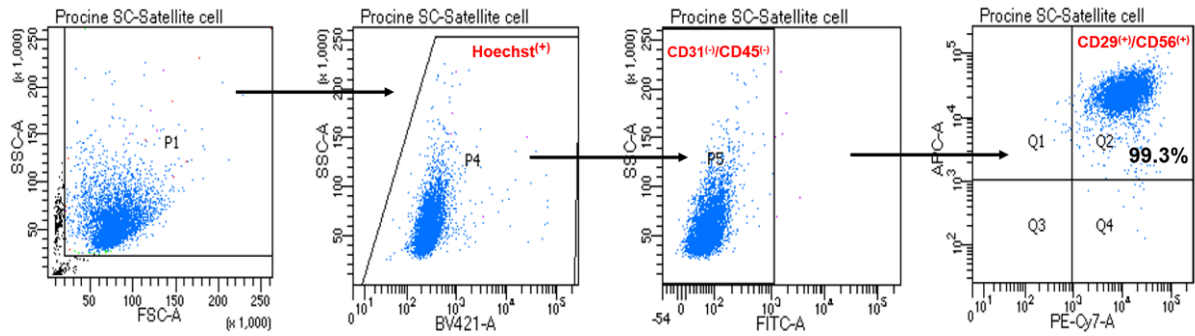


Figure S1. Purity identification of porcine skeletal muscle satellite cells using specific cell surface markers.

Cells were gated by side scatter (SSC), forward scatter (FSC) and hoechst prior to gating for the negative marker CD31 and CD45. Then, the cells were gated with the positive markers CD29 and CD56. Flow cytometry analysis of the CD29 and CD56 positive rate was 99.3%.