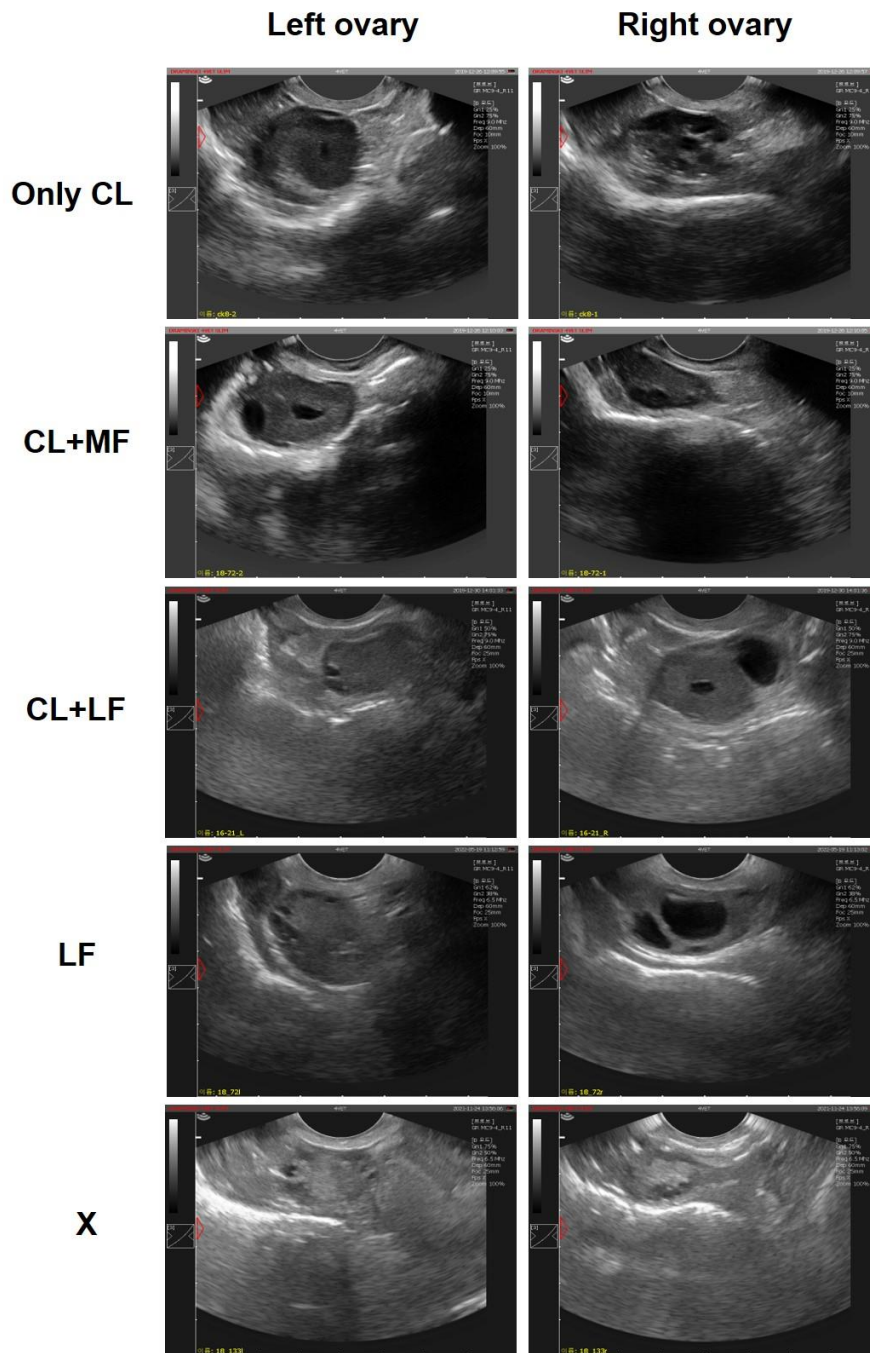
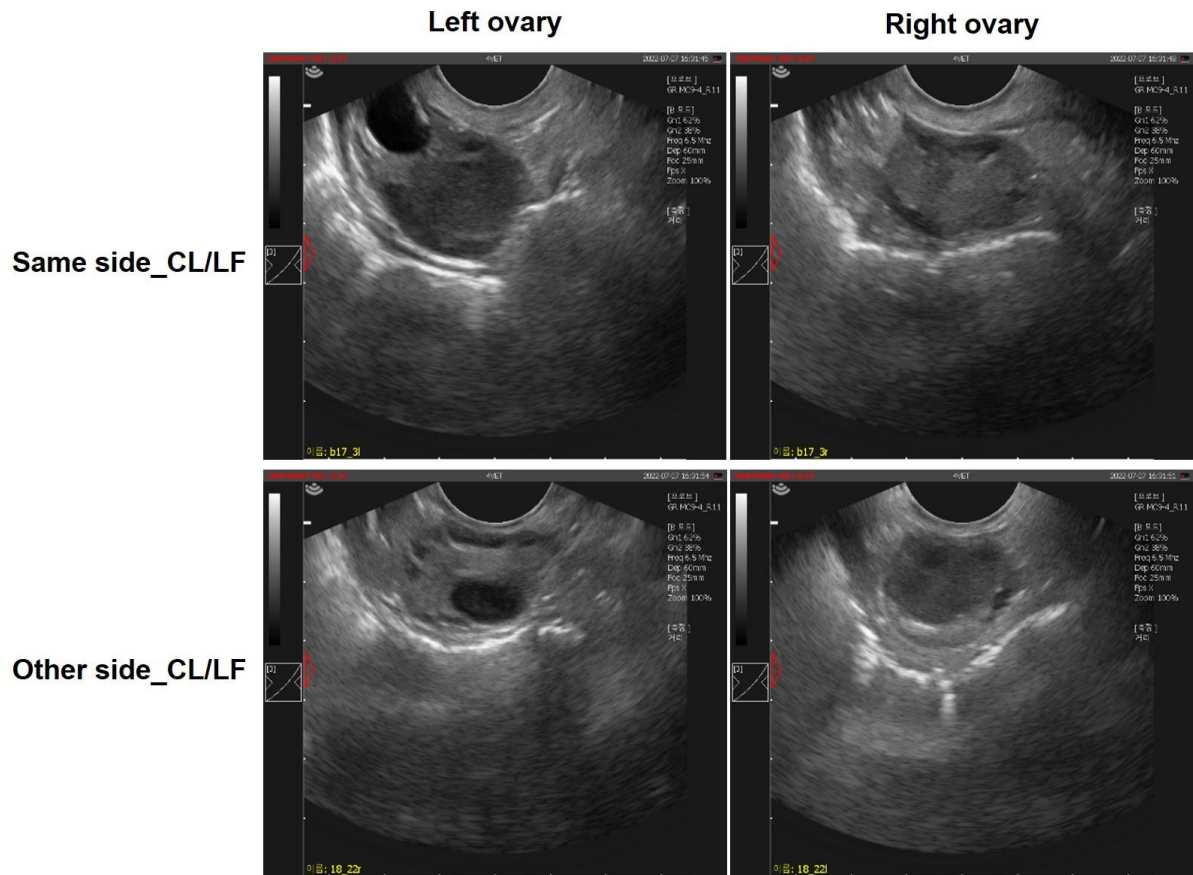


SUPPLEMENTARY MATERIALS



Supplementary Fig. 1. The subjects were divided into four experimental groups. The “Only CL” group comprises cases where only the corpus luteum is present in the left or right ovary. The “CL+MF” group represents cases in which both the corpus luteum and a middle-sized (5–10 mm) coexistent follicle are observed. The “CL+LF” group consists of cases with the corpus luteum and a large-sized (>10 mm) coexistent follicle. The “LF” group includes cases where there is no corpus luteum, only a large-sized coexistent follicle. The “X” group pertains to cases in which neither a corpus luteum nor a follicle is detected



Supplementary Fig. 2. For further analysis within the “CL+LF” groups, the combination of corpus luteum and the coexisting large follicle is designated as “Same side_CL/LF” when they are within the same ovary and “Other side_CL/LF” when they are found in different ovaries.