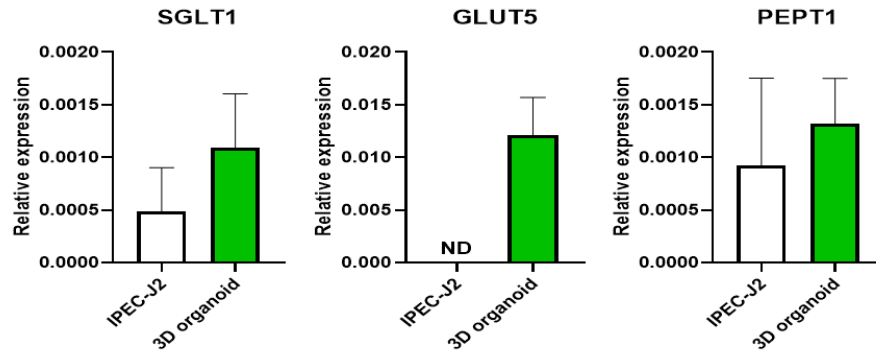
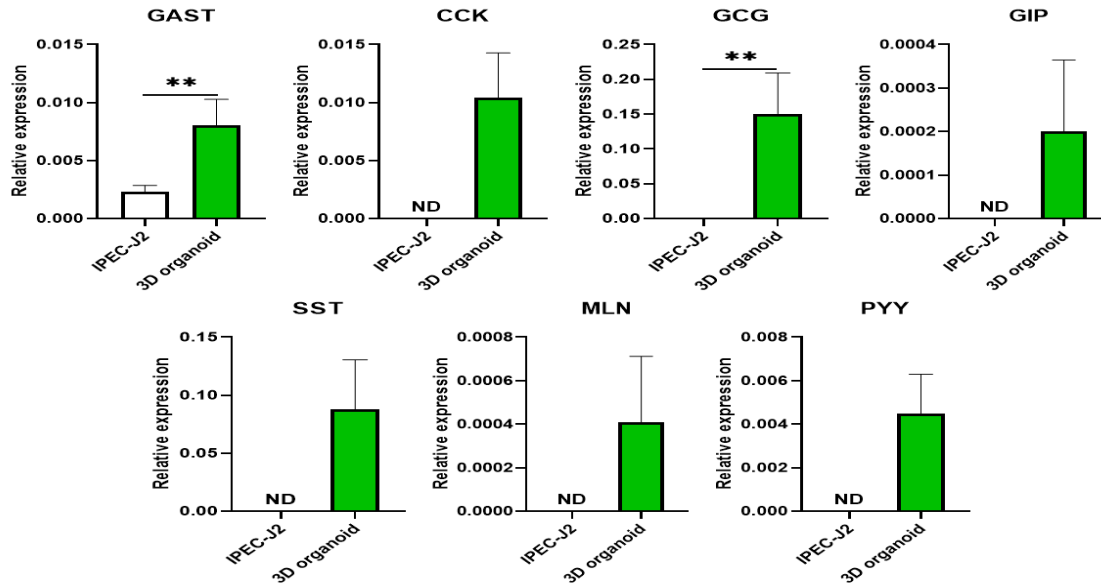


1 (A)



10 (B)



27 **Fig. S1 Nutrition-related properties comparison of IPEC-J2 cell and pig intestinal organoids.** (A) Expression  
28 of the mRNA levels of nutrients transporter genes in IPEC-J2 and pig intestinal organoids. (B) Expression of the  
29 mRNA levels of gastrointestinal hormone genes in IPEC-J2 and pig intestinal organoids. Data are presented as mean  
30  $\pm$  standard deviation (SD) (n = 3-5). \*\*  $p < 0.01$ , ND; non-detected.